

# GREAT SMOKY MOUNTAINS

## NORTH CAROLINA TRAVEL GUIDE



PLAN YOUR ULTIMATE PLAYCATION

#LoveNCsmokies • [www.visitsmokies.org](http://www.visitsmokies.org)



Where the buffalo roam  
& we welcome guests to stay



Luxury Cabins | Caboose Rentals | Pet Friendly  
65 Acre Bison Ranch | Model Train Layout



**USE CODE  
HOST23  
FOR 5% DISCOUNT**

Located on Trinity Bison Ranch  
828.550.0960 | [buffalocreekvacationsNC.com](http://buffalocreekvacationsNC.com)



## TABLE OF CONTENTS

### PLAN YOUR JOURNEY:

Blueways	4-5
#LoveNCsmokies	6-7
Campgrounds & Recreation Areas	8-9
Hiking, Biking & Horseback Riding Trails	10
Kids Adventures	11
Must-Do Adventures	12-13
National Parks & National Forests	14-15
Outdoor Experiences	16-19
Scenic Byways	20-21
Waterfalls	22-25

### WESTERN NC REGION:

Bryson City	28-39
Cherokee	40-47
Fontana, Robbinsville & Lake Santeetlah	48-55
Franklin & Nantahala	56-69
Hayesville & Brasstown	70-75
Highlands, Cashiers, Glenville, Sapphire & Scaly Mountain	76-79
Murphy & Andrews	80-85
Sylva, Dillsboro, Balsam & Cullowhee	86-95
Waynesville, Maggie Valley & Canton	96-103
Nearby Neighbors - GA & NC	104-105

Published by  
Smoky Mountain Host



Proud to be part of  
the Blue Ridge National  
Heritage Area



Smoky Mountain Visitor Center is  
operated in partnership with the North  
Carolina Department of Transportation



 SmokyMountainHost

 @VisitSmokies

 VisitSmokies

 @visitsmokies

Tag your adventure **#LoveNCsmokies**

**828.369.9606 | VisitSmokies.org**

SHARE YOUR GREAT SMOKY MOUNTAINS  
NORTH CAROLINA ADVENTURE

# #LoveNCsmokies

**SUNSETS ARE BETTER IN  
NORTH CAROLINA'S  
MOUNTAINS**



[ncdot.gov/scenic](http://ncdot.gov/scenic)

**ARCHEOLOGY · CULTURE · HISTORY  
NATURE · RECREATION · SCENIC BEAUTY  
ALL PART OF A NC BYWAY OUTING**

**#NCSCENICBYWAYS · #NCDOT**

# North Carolina Smoky Mountain Blueways

## 167 Miles of Waterways



# DESTINATION

# Blueways



## The Only National Water Trail in North Carolina

### The Great Rivers & The Great Lakes of The Great Smokies

★ This trail is one of 33 in the National Water Trails System. It is located in the Little Tennessee Watershed, containing portions of the five major rivers:

- Cheoah River
- Little Tennessee River
- Nantahala River
- Oconaluftee River
- Tuckasegee River

★ To learn more about the North Carolina Smoky Mountain Blueways, visit [www.nrtdatabase.org/trailDetail](http://www.nrtdatabase.org/trailDetail)

Grab a copy of the Blueways map from the Smoky Mountain Host Visitor Center, 4437 Georgia Road, Franklin, NC 288-369-9606 or online at [smokymountainblueways.com](http://smokymountainblueways.com).

### Cheoah River

- Located near Robbinsville.
- Unique Features: Exciting Rapids - Class IV & V (during release days)
- One of the most physically demanding rivers in the world!

### Fontana Lake

- Offers best smallmouth bass fishing.
- Enjoy: Boating, Floating & Kayaking.
- Hikers enjoy views from observation tower on Clingmans Dome.

### Lake Glenville

- Only 8 miles from Cashiers.
- 26 miles of shoreline.
- Highest elevation lake east of the Mississippi.
- Known to avid fisherman for smallmouth Bass.



### Little Tennessee River

- River & Watershed comprise one of the richest archaeological areas in the SE of U.S.
- River drains portions of 3 national forests: Chattahoochee, Cherokee & Nantahala.

### Nantahala Lake

- Only place to find Kokanee Salmon in the Southeast.
- Sits above Nantahala Gorge.
- Known for scenic beauty, crystal-clear waters, excellent fishing.

### Nantahala River

- Offers family-friendly rapids & kayaking.
- America's most popular 8 miles of rapids-Class II & III.
- One the top 100 Trout streams in U.S.

### Oconaluftee River

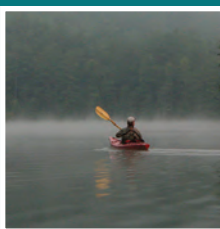
- Considered sacred waters by the Cherokee.
- Popular for: Canoeing, Tubing & Wading, Fishing.
- River drops 2,000 feet over 10 miles.
- Famous for Rainbow, Brook & Brown Trout.

### Santeetlah Lake

- 8 miles from Appalachian Trail.
- 50 primitive campsites & 200 miles of trails - Cheoah District.
- Variety of fishing: Bass, Crappie, Walleye, Bream & Trout.

### Tuckasegee River

- Known as the "Tuck".
- Popular for Floating, Fishing, Tubing, Canoeing, Rafting, Kayaking & Fly Fishing.





# A FEW REASONS TO



- Western NC Region - Most of the Highest-Elevation Mountains in the U.S.

[smokymountains.com/park/blog](http://smokymountains.com/park/blog)

---



- See Unique Views - From The Great Smoky Mountains Railroad

[gsmr.com](http://gsmr.com)

---



- The Nantahala Outdoor Center - Best Outfitters on Earth per National Geographic Adventure Magazine

[noc.com](http://noc.com)

---



- Get Lucky - Harrah's Cherokee Casino & Resort, Cherokee and/or Harrah's Cherokee Valley River Casino & Hotel, Murphy

[caesars.com](http://caesars.com)

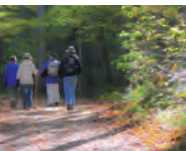
---



- Absorb Culture - Cherokee showcases History of Tribe, Living Re-enactments of Village Life & Authentic Cherokee artwork

[cherokeesmokies.com](http://cherokeesmokies.com)

---



- Nantahala & Pisgah National Forests - Two of the most visited National Forests in the U.S.

[fs.usda.gov](http://fs.usda.gov)



# #LoveNCsmokies

- Pristine Waterways - Best Trout Fishing in the World

[discoverjacksonnc.com/outdoors/fishing](https://discoverjacksonnc.com/outdoors/fishing)

.....



- Rich Appalachian Heritage - See Craftsmanship found in Handcrafted Furniture, Pottery, Quilts & Music

[blueridgeheritage.com](https://blueridgeheritage.com)

.....



- Bluegrass - Enjoy great Local Music & Traditional Clogging

[blueridgemusicnc.com](https://blueridgemusicnc.com)

.....



- Water, Water, Water - Swimming, Waterfalls, Rafting, Kayaking, Canoeing, Paddleboarding, Tubing, Fishing & Blueways

[visitsmokies.org](https://visitsmokies.org)

.....



- Drive Away Your Troubles - Blue Ridge Parkway, Cherokee Skyway & NC Scenic Byways

[ncdot.gov/scenic](https://ncdot.gov/scenic)



**visitsmokies.org**





# CAMPGROUNDS & RECREATION AREAS

NANTHALA NATIONAL FOREST			Camping	Picnic Area	Restrooms	Trailer Space	Trailer Dump Station	Showers	Drinking Water
1	Balsam Lake	Open April-Oct		•					
2	Bob Allison Campground	Open year-round		•	•				•
3	Cable Cove	Open April-Oct	•	•	•	•			•
4	Cheoah Point	Open April-Oct	•	•	•	•			•
5	Cherokee Lake	Open year-round		•	•				•
6	Cliffside Lake	Open May-Oct	•	•	•				•
7	Ferebee Memorial	Open year-round		•					
8	Fires Creek	Open year-round		•	•				
9	Horse Cove*	Open year-round	•		•	•			•
10	Hurricane Primitive	Open April 16-Dec 31	•			•			
11	Jackrabbit Mountain	Open May-Sept	•	•	•	•	•	•	•
12	Joyce Kilmer	Open year-round		•	•				•
13	Nantahala Gorge	Open year-round		•					
14	Rattler Ford***	Open mid-Apr-mid Oct						•	•
15	Snowbird	Open year-round		•	•				
16	Standing Indian	Open April-Nov	•	•	•	•	•	•	•
17	Sunburst	Open May-Nov	•	•		•			•
18	Tsali	Open April-Oct	•	•		•		•	•
19	Van Hook Glade	Open May-Oct	•		•	•			•
20	Wayah Bald	Open April 16-Dec 31		•	•				
21	Whiteside Mountain	Open year-round							
22	Whitewater Falls	Open year-round			•				

## GREAT SMOKY MOUNTAINS NATIONAL PARK

1	Balsam Mountain*	Open year-round	•	•	•	•			•
2	Cades Cove**	Open year-round	•	•	•	•			•
3	Cataloochee	Open April-Oct	•	•	•	•			•
4	Deep Creek	Open May-Oct	•	•	•	•			•
5	Elkmont*	Open year-round	•	•	•	•			•
6	Smokemont**	Open year-round	•	•	•	•			•

\*In winter no water or fee \*\*Weather permitting

\*\*\*For reservations: (877) 444-6777 or visit [recreation.gov](http://recreation.gov).

Call the ranger station if you have additional questions about facilities and activities.



# CAMPGROUNDS & RECREATION AREAS

NANTAHALA NATIONAL FOREST		Handicap Accessible	Hiking Trail	Horse Trail	Bike Trail	Swimming	Boat Ramp	Canoe/Rafting	Fishing	Scenic Views	Ampitheater	Information	Fee Required
1	Balsam Lake	•	•						•				
2	Bob Allison		•										
3	Cable Cove						•		•				•
4	Cheoah Point		•				•		•				•
5	Cherokee Lake	•							•				
6	Cliffside Lake		•			•			•				•
7	Ferebee Memorial							•	•				
8	Fires Creek			•					•				
9	Horse Cove*								•				•
10	Hurricane Primitive		•	•					•				
11	Jackrabbit Mountain		•			•	•		•		•		•
12	Joyce Kilmer		•									•	
13	Nantahala Gorge							•	•	•			
14	Rattler Ford***		•						•				
15	Snowbird								•				
16	Standing Indian		•						•				•
17	Sunburst												•
18	Tsali		•	•	•		•		•				•
19	Van Hook Glade												•
20	Wayah Bald		•							•			
21	Whiteside Mountain		•							•			
22	Whitewater Falls		•							•			

## GREAT SMOKY MOUNTAINS NATIONAL PARK

1	Balsam Mountain*		•							•			•
2	Cades Cove**	•	•	•					•	•		•	•
3	Cataloochee		•							•			•
4	Deep Creek		•	•					•				•
5	Elkmont*	•	•						•	•		•	•
6	Smokemont**	•	•	•					•	•		•	•

ALL NUMBERS LISTED CORRESPOND WITH FOLD-OUT MAP





# DESTINATION

*Hiking, Biking & Horseback Riding Trails*



TRAIL NAME	Miles	Easy	Moderate	Difficult	Bike Trail	Horse Trail	Fishing	Handicap Accessible
Appalachian Trail to Charlie's Bunion	4		•	•				
Appalachian Trail to Wesser Bald	2		•					
Bartram Trail	37.7	•						
Benton Mackaye Trail	300	•	•	•				
Big Indian Horse Trail	8		•			•	•	
Big Snowbird Trail	12.7			•			•	
Fire Mountain Trails	10.5			•	•			
Fires Creek Area Trails	.3-5.4	•	•	•		•	•	
Fontana Village Trails	20	•	•	•	•			
Jackrabbit Mountain	14	•	•		•			
Jackrabbit Mountain Trail	2.5	•					•	
Joyce Kilmer Memorial Trail	2	•					•	
Mallonee Trail	5	•					•	•
Maple Springs Observation Point	800	•						•
Mountains-to-Sea Trail	108			•	•	•		
Panthertown Valley	30		•		•			
Santeetlah Bike Trails	15	•	•		•			
Santeetlah Lake Trail	15			•	•			
Tsali Recreation Area	15		•		•	•		
Western Carolina University Trail	6.6		•		•			
Whiteside Mountain Trail	2	•						
Yellow Mountain Trail	6.4			•				



DESTINATION

# Fun for The Kids & Kids At Heart

## TUBING

**Smoky Mountain River Adventures & Smoky Mountain Tubing,**  
*Sylva & Cherokee*

**Deep Creek Tubing,**  
*Bryson City*

## MINI GOLF

**Fontana Village Resort,**  
Pool & mini golf.  
*Fontana Dam*

## GEM MINING

**Mason's Ruby & Sapphire Mine, Sheffield Gem Mine, Gold City Gem Mine, Rose Creek Gem Mine, Primitive Outback, Kayaking & Gem Mining, Andy's Trout Farm, Jackson Hole Trading Post & Gem Mine, Deep Creek Gem Mine,**  
*Franklin, Highlands, Bryson City & Murphy*

## RAILROAD

**Great Smoky Mountains Railroad,**  
*Bryson City*

## TROUT FISHING

**Andy's Trout Farm and Scaly Mountain Outdoor Center,**  
*Franklin & Highlands*

## BISON VIEWING

**Buffalo Creek Vacations,**  
*Clyde*

## WINTER ACTIVITIES

**Highlands Outpost**  
Summer & Winter tubing, ice skating.  
*Highlands*

## ARCADE/BOWLING

**Harrah's Cherokee & Valley River Casino Resorts (Ultra Star Multi-tainment Center)**  
Arcade & bowling.  
*Cherokee & Murphy*

## WHITewater RAFTING

**Nantahala Outdoor Center, Carolina Outfitters, Rolling Thunder, Wildwater and Brookside,**  
*Bryson City.*  
Ages 7+.

## ZIPLINING

**Nantahala Outdoor Center, Wildwater and Highlands Aerial Park,**  
*Bryson City & Highlands*

## GOAT FEEDING & VIEWING

**Goats On The Roof,**  
*Tiger, GA*



DESTINATION

# Must-Do Adventures



## IN THE NORTH CAROLINA Great Smokies

### 1. Take a Trip on The Great Smoky Mountains Railroad

Departing from historic Bryson City, this scenic excursion railroad has a variety of trips and packages for any kind of adventure. Take in the fresh air while riding on open-air gondola car trips, or enjoy a gourmet meal in a first-class dining car during the food-friendly trips. [gsmr.com](http://gsmr.com)

### 2. Book an Adventure with Nantahala Outdoor Center

Named "One of the Best Outfitters on Earth" by National Geographic Adventure, Nantahala Outdoor Center offers a range of adventures to get your family enjoying the outdoors. Choose from family-friendly outdoor adventures including Nantahala River whitewater rafting, a new Mountaintop Zip Line Tour in the Nantahala Gorge and a family-friendly Zip Line Adventure Park. [noc.com](http://noc.com)

### 3. Feel the Influence of Cherokee

Located in the heart of Western North Carolina, Cherokee is a culture, a people and a sovereign nation. Take a mud-splattering romp through the nearby Great Smoky Mountains, while hearing the creation legend in the Museum of the Cherokee Indian, or watch the profound outdoor drama "Unto These Hills." See how the Cherokee lived two and a half centuries ago at the Oconaluftee Indian Village, an authentic working village with dwellings, residents and artisans right out of the 1760s. Plan. Play. Visit. And discover at [visitchokeenc.com](http://visitchokeenc.com)



#### **4. Count Your Luck at Harrah's Cherokee Casino and Resort**

A casino, luxury hotel with fine dining options, world-renowned spa and event center, Harrah's Cherokee Casino and Resort offers a luxurious experience within the North Carolina Smoky Mountains. The new Harrah's Cherokee Valley River Casino & Hotel in Murphy offers many of the same amazing amenities with over 60,000 square feet of gaming. Book your stay at [caesars.com/harrahs-chokeee](https://caesars.com/harrahs-chokeee)

#### **5. Mosey Along The Blue Ridge Parkway or NC Scenic Byways**

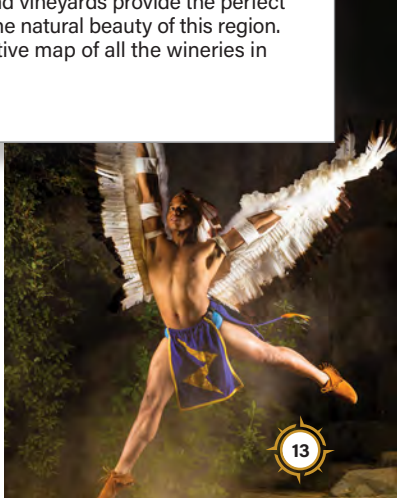
Named "America's Favorite Drive," the Parkway—a National Scenic Byway—offers 469 miles connecting the Great Smoky Mountains National Park in North Carolina to the Shenandoah National Park in Virginia. If you need to stretch your legs, there are ample recreational opportunities for all ages and abilities just off the road. However long you drive, make sure to get out and personally witness the natural beauty of one of the world's most diverse displays of flora and fauna. [blueridgeparkway.org](https://blueridgeparkway.org)

North Carolina's 62 scenic byways allow travelers to experience some of the state's history, geography, and breathtaking views while avoiding the faster pace and commercial areas found along major highways. [ncdot.gov/scenic](https://ncdot.gov/scenic)

#### **6. Unwind at Breweries and Wineries**

The explosion of craft breweries is happening all over the Smokies! Craft breweries are now operating in Andrews, Bryson City, Cashiers, Cherokee, Franklin, Hayesville, Highlands, Murphy, Sylva and Waynesville, with more opening all the time. Travelers could spend days exploring each small town's unique breweries and never visit the same place twice. [avlbrewers.com](https://avlbrewers.com)

While you wind your way through the mountains, take some time to explore the scenic beauty and taste the fruits of our vineyards. Western North Carolina's wineries and vineyards provide the perfect setting to imbibe, relax and revel in the natural beauty of this region. Visit [ncwine.org](https://ncwine.org) for a helpful interactive map of all the wineries in the region.





# DESTINATION

## National Parks & National Forests

### **Blue Ridge Parkway**

The most visited unit of the National Park System, the Blue Ridge Parkway is known for its stunning views, abundant hiking trails, picnic areas, campsites and informational exhibits. Named "America's Favorite Drive," the Parkway offers 469 miles connecting the Great Smoky Mountains National Park in NC to the Shenandoah National Park in VA and is definitely worth the trip. Experience the world's most diverse display of flora and fauna. [blueridgeparkway.org](http://blueridgeparkway.org)

### **Great Smoky Mountains National Park**

Straddling NC and TN, the Great Smoky Mountains National Park encompasses over half-a-million acres, making it the largest national park in the East. It has more species of plants, animals and insects than anywhere else in the world, rivaling even the rainforests. Hike on one of the more than 900 miles of trails in the park. Locals agree that the NC side of the park is considered more pristine and tranquil and is less heavily used than the TN side. [nps.gov](http://nps.gov)



### The folkways of Appalachia

Just off of U.S. Highway 441 through Great Smoky Mountains National Park sits Mingus Mill, a historic gristmill built in 1886 and a living piece of Smoky Mountain history. Visitors can purchase corn meal and other mill-related items while seeing how a real mill works. Just a half mile down the road at the Oconaluftee Visitor Center, you'll find The Mountain Farm Museum. *Mingus Creek Trail, Cherokee, NC*





## Nantahala National Forest

Nantahala National Forest is the largest of the four national forests in North Carolina, covering just over half-a-million acres. There are more than 27,000 acres of designated wilderness found in its hills, including Ellicott Rock, Joyce Kilmer-Slickrock and the Southern Nantahala Wilderness.

The Nantahala National Forest is renowned for whitewater rafting, mountain biking, camping and hiking. World-renowned trails including The Appalachian Trail, Bartram's Trail and the Mountains-To-Sea Trail all meander through the forest. [fs.fed.us](http://fs.fed.us)

## Pisgah National Forest

The Pisgah National Forest began as a part of George Vanderbilt's private estate. The area west of Vanderbilt's Asheville Biltmore Estate was sold to the federal government after his death in 1914 and became the first tracts of the now half-million-acre Pisgah National Forest. Today, Pisgah is home to the Shining Rock Wilderness Area, Max Patch, the Harmon Den Bear Preserve, The Cradle of Forestry and Sliding Rock. [fs.fed.us](http://fs.fed.us)







# DESTINATION *Outdoor Experiences*

## FOR THE WHOLE FAMILY

### **Fishing**

Nationally recognized for native and stocked trout, fishermen are happy to explore the many lakes, creeks and rivers that run through the area. Cherokee is a former site of the U.S. National Fly Fishing Championships and offers some of the best fishing in the U.S. You'll fall in love with the beautiful freestone streams stocked with trout that flow through Qualla Boundary. Jackson County has a fly-fishing trail that is sure to amaze, considering it was the first of its kind in the country. If that isn't enough, now Swain County has one too and Bryson City is home to the Fly Fishing Museum Of the Southern Appalachians!

Nonresident and resident fishing permits and licenses can be purchased online. Special tribal fishing permits can be acquired to fish on the Qualla Boundary of the Eastern Band of Cherokee Indians at [fishcherokee.com](http://fishcherokee.com). State fishing licenses can be acquired at [ncwildlife.org/licensing](http://ncwildlife.org/licensing).

### **Gem Mining**

Many gem mines in the region offer a wonderful experience as adults and children sift through locally mined soil to try and uncover valuable stones. Deep Creek Tubing/Campground, Bryson City; Sheffield Gem Mine, Franklin; Gold City Gem Mines, Franklin; Jackson Hole Gem Mines, Highlands; Mason's Ruby and Sapphire Mine, Franklin; Rose Creek Mine, Franklin; Primitive Outback Kayaking & Gem Mining, Otto; and Andy's Trout Farm, Otto all offer an unforgettable experience.

### **Golfing**

Gentle slopes and woods-rimmed fairways beckon pros and amateurs alike to indulge in a relaxing, scenic game at Sequoyah National Golf Club, NC and Sky Valley Country Club, GA.



### **Horseback Riding**

Whether it's an all-day ride with a picnic or a shorter excursion, children and adults of all ages will enjoy a guided horseback-riding trip through the mountains. To book a trip, check out one of the many operating stables in the Smokies, including Arrowmont Stables & Cabins, Cataloochee Ranch, Chunky Gal Stables and Smokemont Stables.

### **Motorcycling**

For a winding trip through the mountains, take a tour on The Dragon, which is considered "**THE DESTINATION**" for thousands of motorcycle and sports car fans throughout the spring, summer and fall. Along your way, stop by Deal's Gap Motorcycle Resort for a bite to eat, shop or a place to stay. Motorcycle sales and services are available at Smoky Mountain Steel Horses in Waynesville.

### **Mountain Biking and Hiking Trails**

Whether you want short or long, difficult or easy, trees or waterways, there are mountain biking and hiking trails for every adventure, and then more trails on top of that.

### **Rafting and Kayaking**

The North Carolina Great Smokies are known for whitewater rafting. Named "One of the Best Outfitters on Earth" by *National Geographic Adventure*, Nantahala Outdoor Center offers a wide array of adventures for everyone in your group. If you're looking for tamer, family-friendly river experiences, the Tuckasegee River and the Little Tennessee River are perfect places to get children out on the water. There are plenty of companies that book trips on these rivers, including Smoky Mountain River Adventures in Whittier and Primitive Outback Kayaking & Gem Mining in Otto. For more exciting rafting experiences, check out Brookside, Carolina Outfitters, Rolling Thunder and Wildwater.

### **Snow Tubing**

Downhill tubing in the North Carolina Smokies offer breathtaking mountain views. Celebrate the outdoors and have more fun than ever this winter by snow tubing and ice skating at Highlands Outpost. The town of Highlands has an ice skating rink at Kelsey-Hutchinson Park.

### **Water Tubing and Paddleboarding**

One of summer's sweetest pleasures in the North Carolina Smokies is floating along the cool mountain waters. No tube? No worries. All four rivers have companies to outfit you with a tube. Some more popular spots are Deep Creek Tubing in Bryson City; Smoky Mountain Tubing on the Oconaluftee River in Cherokee; Smoky Mountain Adventures in Whittier; on the Tuckasegee River and Primitive Outback on the Little Tennessee River south of Franklin in Otto. If standing is more your thing, try the increasingly popular paddleboarding.

### **Zip Lining**

If you've taken the time to see the forest from the trails, perhaps it's time to get a bird's-eye view. Three popular spots are the Nantahala Outdoor Center in Bryson City; Wildwater Nantahala Gorge Adventure Center in Wesser and the Highlands Aerial Park at Scaly Mountain.





DESTINATION

Outdoor Experiences

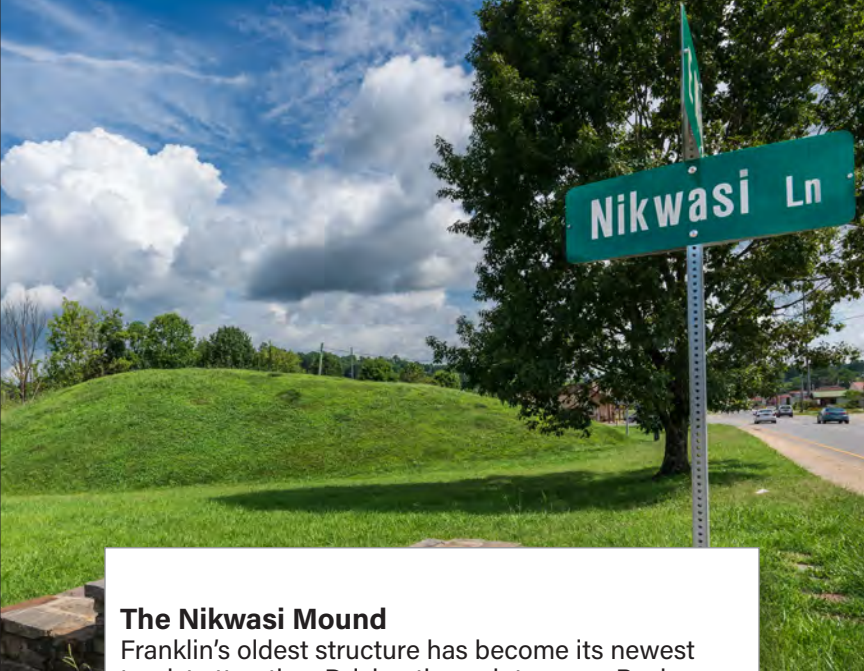
### **The Cowee Mound**

In 2007, the Eastern Band of Cherokee Indians purchased 70 acres along the Little Tennessee River that included the historic Cowee Mound and Village Site, thought to date from approximately 600 A.D. The transaction was made possible with assistance from Mainspring (then the Land Trust for the Little Tennessee) and the N.C. Clean Water Management Trust Fund. There is a conservation easement on the property that permanently protects its conservation values and prevents commercial and residential development.

The council house of the Cherokee town of Cowee was located on this mound in the 18th century, when the town of Cowee served as the principal diplomatic and commercial center of the mountain Cherokee. Cowee is considered one of the most significant archaeological sites of the Mississippian period in North Carolina, where the presence of agriculture on the bottomlands dates back at least 3,000 years.

*Located in Cowee Historical District on Highway 28, Franklin, NC.*





### **The Nikwasi Mound**

Franklin's oldest structure has become its newest tourist attraction. Driving through town on Business U.S. 441, it's easy to overlook Nikwasi Mound, especially if traffic is heavy. The mound sits between the northbound and southbound lanes, marked only by two historical markers. Once, it was the center of one of the Cherokees' most important towns, which encompassed some 100 acres. It first appears on maps in 1544 but could have existed for centuries before that.

It was the site of treaty talks with South Carolina in 1727. Talks presumably were held in a council house atop the mound. At that time, the village had some 150 residents. Further negotiations were held in 1730, as noted on the older and smaller of the two markers.

*Located on Main Street in downtown Franklin, NC.*





# DESTINATION Scenic Byways



Follow the byways, and you will see some of the most breathtaking scenery in the North Carolina Great Smokies. Designated specifically to give visitors and residents a chance to experience a bit of North Carolina history, geography and culture, they also raise awareness for the protection and preservation of area treasures. For more information, visit [ncdot.gov/scenic](http://ncdot.gov/scenic) to guide your tour along the region's Scenic Byways.

## 1 Cherohala Skyway

Esquire magazine said, "It's like driving through a car commercial." Connecting the Cherokee National Forest to the Nantahala National Forest, this clean, smooth highway encourages you to open up your sports car or pause your RV for a sandwich and the beautiful sights. And the skyway vs. byway bit? Once you drive it, you'll understand.

*20 miles • 45 minutes • Graham County*

## 2 Forest Heritage Scenic Byway

Take off on U.S. 276 North from Brevard on the Forest Heritage Scenic Byway to see the Cradle of Forestry, the Pink Beds and Shining Rock Wilderness.

*65 miles • 2 hours*

*Haywood, Transylvania and Jackson counties*

## 3 Indian Lakes Scenic Byway

Where NC 28 meets U.S. 129 near the Tennessee border, fans of crystalline lakes (especially those featuring Indian names) will find their calling. Just leave what's known as "The Dragon" and discover the first landmark, Fontana Dam. From there, you'll have a hard time watching the road as you pass the likes of Fontana Village and Stecoah on the way to the byway's meandering end.

*57 miles • 1.5 hours*

*Swain, Graham and Cherokee counties*





#### 4 Nantahala Byway

The Cherokee used "Nantahala" to mean "Land of the Noonday Sun." Why noonday? Well, likely for the steep walls that frame the Nantahala Gorge from the morning sun, an impressive site you'll tour as part of this swirling byway. Nearby, the Nantahala River has become legendary for its whitewater. Just depart from Marble, head east and don't stop until you pass Wesser.

43 miles • 1.5 hours

*Cherokee, Graham, Jackson and Swain counties*

#### 5 Smoky Mountain Scenic Byway

Travel through the Great Smoky Mountains National Park, renowned for its diverse plant and animal life. A trip along this road puts you in close proximity to some of North Carolina's most captivating wildlife, and gives a glimpse of the Southern Appalachian pioneer culture that once dominated the region. Just hop off the Blue Ridge Parkway onto U.S. 441 near the Qualla Boundary of the Cherokee Indian Reservation and head north into Tennessee.

16.5 miles • 35 minutes • *Swain County*

#### 6 Waterfall Byway

Strangely powerful or eerily tranquil, waterfalls do have a way of casting a spell. If you happen to be a fan, this is your byway. Winding 98 miles and featuring more than 200 distinct waterfalls, it begins at U.S. 64's intersection with NC 215. Where it ends is likely somewhere far deeper within you.

98 miles • 3.5 hours

*Clay, Jackson, Macon and Transylvania counties*

#### 7 Whitewater Way

Quick: You have three guesses as to what you'll encounter on this scenic byway. The aptly named Whitewater Way is named for Whitewater Falls, which is the highest waterfall east of the Rockies. Take NC 281 and hike the many trails leading to spectacular rushing water. Bathroom breaks are a must.

9 miles • 20 minutes

*Transylvania and Jackson counties*



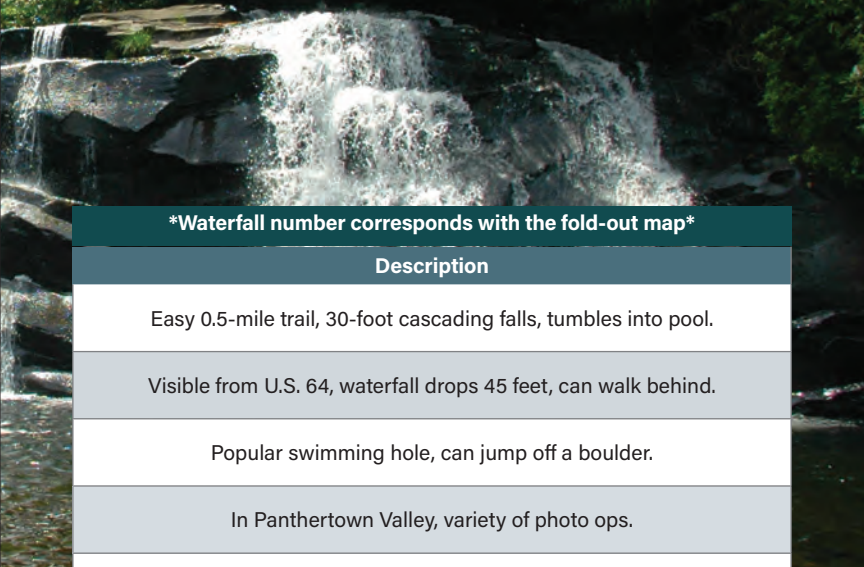


# DESTINATION

## Chasing Waterfalls

	Waterfalls	Town	County
1	<b>Big Laurel Falls &amp; Mooney Falls</b>	Otto	Macon
2	<b>Bridal Veil Falls</b>	Highlands	Macon
3	<b>Bust-Yer-Butt Falls</b>	Highlands	Macon
4	<b>Carlton Falls</b>	Sapphire	Jackson
5	<b>Chasteen Creek Falls</b>	Cherokee	Swain
6	<b>Courthouse Falls</b>	Balsam Grove	Transylvania
7	<b>Cullasaja Falls</b>	Franklin	Macon
8	<b>Dry Falls</b>	Highlands	Macon
9	<b>Frolictown Falls</b>	Sapphire	Jackson
10	<b>Glen Falls</b>	Highlands	Macon
11	<b>Gina Falls</b>	Sylva	Jackson
12	<b>Granny Burrell Falls</b>	Sapphire	Jackson
13	<b>Greenland Creek Falls</b>	Sapphire	Jackson
14	<b>High Falls</b>	Glenville	Jackson
15	<b>Indian Creek Falls</b>	Bryson City	Swain
16	<b>Jawbone Falls</b>	Glenville	Jackson
17	<b>Juney Whank Falls</b>	Bryson City	Swain
18	<b>Leatherwood Falls @ Fires Creek</b>	Hayesville	Clay
19	<b>Looking Glass Falls</b>	Brevard	Transylvania
20	<b>Mingo Falls</b>	Cherokee	Qualla Boundary





**\*Waterfall number corresponds with the fold-out map\***

**Description**

Easy 0.5-mile trail, 30-foot cascading falls, tumbles into pool.

Visible from U.S. 64, waterfall drops 45 feet, can walk behind.

Popular swimming hole, can jump off a boulder.

In Panthertown Valley, variety of photo ops.

Great stop for campers staying at Smokemont Campground.

Hike 1/2 mile, pool at base is deep, water is clear & cold.

250 foot falls, cascades viewable from road, safest approach on Franklin side.

Also known as Upper Cullasaja Falls, 65-foot fall, NW of Highlands.

15-foot waterfall, vertical drop, great stop on Great Wall Trail.

One-mile trail hike is steep & rough but consist of three 60 foot falls each.

In Pinnacle Park, near urban area, 35-foot upper drop with cascades below.

Kid-friendly-sliding, swimming, sunbathing @ beach, large pool.

Steep cascade drops on boulder ledges, cascades into deep pool.

Also known as Cullowhee Falls, has two-section free fall over cliff.

Easy 1.6 mile roundtrip hike allows you to enjoy two beautiful waterfalls.

Small island downstream & a pool, picturesque spot.

Divided in upper & lower, both viewed from footbridge, 90 foot drop.

75-foot falls visible from picnic area. Paved trail, great for kids!

Roadside gorgeous views, just off Blue Ridge Pkwy, near Brevard.

120 foot high, tallest in the southern Appalachians.







# DESTINATION *Chasing Waterfalls*

	Waterfalls	Town	County
21	Moses Creek Falls	Cullowhee	Jackson
22	Mouse Creek Falls	Waynesville	Haywood
23	North Shoal Creek Falls	Murphy	Cherokee
24	Rainbow Falls	Brevard	Transylvania
25	Rock Slab Falls	Cherokee	Swain
26	Rough Butt Creek Falls	Cullowhee	Jackson
27	Rufus Morgan Falls	Franklin	Macon
28	Sassafras Falls	Robbinsville	Graham
29	Secret Falls	Highlands	Macon
30	Schoolhouse Falls	Sapphire	Jackson
31	Silver Run Falls	Cashiers	Jackson
32	Sliding Rock	Brevard	Transylvania
33	Soco Falls	Maggie Valley	Jackson
34	Tom Branch Falls	Bryson City	Swain
35	Toxaway Falls	Brevard	Transylvania
36	Whitewater Falls	Cashiers	Jackson
37	Yellow Creek Falls	Robbinsville	Graham

Numbers above correspond with the fold-out map





### Description

Calling all daredevils: 100-foot, a bit difficult to see, steep.

Tiered water cascades, swimming, popular & beautiful.

Stunning 30' tall, cascades over rock layers, offers tranquility.

Exceptionally beautiful, 150 ft. enormous falls-near Gorges St. Park.

Gentle waterfall, sparkling bands of quartz.

30-foot waterfall falls, small pool and rocks coated in moss.

West of Franklin-65 foot falls, 1 mi. hike, family friendly.

This is an interior trail with a noted fishing spot.  
Moderate to Strenuous.

50-foot Hidden Oasis, (known: Big Shoals Falls) cascades  
into serene pool.

Best in Summer, 18-foot falls of Panthertown Valley,  
a mix of cascades.

200 yard trail, 25-foot falls, observation points.

Near Brevard, sliders ride water 60-foot flat, 8 ft. pool.

5-minute trail, double waterfall-edge of Cherokee Indian Reservation.

Wide path, 80-ft. Falls, many benches to admire the falls.

150-foot falls, seen by car, US64 E. near Rosman.

Highest falls E. of Rockies, falling 811 feet-Nantahala Nat'l Forest.

Gorgeous falls-Nantahala Nat'l Forest, easy trail, swimming hole.

[ncwaterfalls.info](http://ncwaterfalls.info)  
[visitsmokies.org/waterfalls](http://visitsmokies.org/waterfalls)







# BRYSON CITY

Road to Nowhere  
Bryson City, NC



42 miles ← from Franklin

31 miles → to Fontana

- **10 miles to Cherokee - Eastern Cherokee Reservation**
- **Gateway to Great Smoky Mtns National Park & part of Appalachian Trail**
- **3 Vibrant Recreation Areas in Bryson City:**
  - ★ **Deep Creek** - Known for Camping, Hiking, Mountain Biking, Picnicking, Tubing & Waterfall: Tom Branch Falls
  - ★ **The Nantahala Gorge** - World-Class Whitewater Destination.
  - ★ **Tsali Recreation** - One of the Finest Mountain Biking Trail Systems in the country.
- **Hidden Gems / Popular Attractions:**
  - ★ **The Road to Nowhere** - Find out the story behind "The Road to Nowhere." [greatsmokies.com/road-nowhere/](https://greatsmokies.com/road-nowhere/)
  - ★ **Tubing on Deep Creek** - Family Fun for the entire day! Experience the thrill of riding an Inner Tube down the rapids in the GSM National Park. Tubing Season: Memorial Day Weekend through Labor Day.

[greatsmokies.com](https://greatsmokies.com)

## AGRITOURISM

### Swain County Farmer's Market

Organic produce, plants, trout, honey, jams, quail and rabbit as well as an array of local crafts. 9am to 1pm on Fridays from May through October.

117 Island St.  
Bryson City, NC 28713  
828-488-3848  
[facebook.com/swaincountyfarmersmarket](https://www.facebook.com/swaincountyfarmersmarket)

## BLUEWAYS

### The Nantahala River

A popular spot offering river rafting and kayaking through family-friendly rapids. It features eight miles of Class II rapids before splashing through the exciting Class III whitewater of Nantahala Falls.



## CULTURE/MUSEUM

### Fly Fishing Museum of the Southern Appalachians

Exhibits/videos of legendary "Stream Blazers," evolution of rods/reels, knots, fly-tying, gear, gamefish, history.

210 Main St.  
Bryson City, NC 28713  
838-488-3681  
[flyfishingmuseum.org](http://flyfishingmuseum.org)

### Smoky Mountain Train Museum

Catch the spirit of model railroading. Museum ranked in top ten in the United States. GSMR-owned and operated.

100 Greenlee St.  
Bryson City, NC 28713  
828-488-5200 • 866-872-4681  
[gsmr.com/smoky-mountain-trains-museum](http://gsmr.com/smoky-mountain-trains-museum)



### Swain County Heritage Museum

Photos, exhibits, video about life of early settlers in small mountain communities. Children's activity area.

2 Everett St.  
Bryson City, NC 28713  
828-488-7857 • 800-867-9246  
[swainheritagemuseum.com](http://swainheritagemuseum.com)

## DINING

### Big Wesser

Enjoy a hearty meal at the intersection of the Appalachian Trail and the Nantahala River. Pets welcome.

13077 Hwy 19 W  
Bryson City, NC 28713  
828-488-7174  
[noc.com](http://noc.com)



### River's End Restaurant

Fuel up for a day of adventure at Nantahala's Gastropub, where every seat is a riverside seat!

13077 Hwy 19 W  
Bryson City, NC 28713  
828-488-7172  
[noc.com](http://noc.com)



### Fryemont Inn

Full country breakfast, four-course dinners. Prime rib, lamb & trout, full bar, fine wines.

245 Fryemont St.  
Bryson City, NC 28713  
828-488-2159 • 800-845-4879  
[fryemontinn.com](http://fryemontinn.com)



### Heavenly Fudge Depot & Shoppe

Fudge, chocolate, truffles, candy, coffee, drinks.

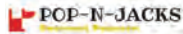
255 C Everett St.  
Bryson City, NC 28713  
828-488-4447  
[fudgedepot.com](http://fudgedepot.com)

### Pop-N-Jacks

**Gourmet Popcorn**

If you haven't tried Pop-N-Jacks gourmet popcorn, you don't know Jack.

225-B Everett St.  
Bryson City, NC 28713  
828-620-3931  
[pop-n-jacks.com](http://pop-n-jacks.com)



## EVENT/WEDDING

### McKinley Edwards Inn

Specializing in intimate weddings to make your special day perfect. On-site coordinator. Catering available. 208 Arlington Ave. Bryson City, NC 28713 828-488-9626 [mckinleyedwardsinn.com](http://mckinleyedwardsinn.com)



## GEM MINES & SHOPS

### Deep Creek Tube Center & Campground

GEM MINING! 1090 W Deep Creek Rd. Bryson City, NC 28713 828-488-6055 [deepcreekcamping.com](http://deepcreekcamping.com)



## LODGING

### Fryemont Inn

Historic inn on national register. Breakfast and dinner included, restaurant, bar, swimming pool, fireplace, suites. 245 Fryemont St. Bryson City, NC 28713 828-488-2159 • 800-845-4879 [fryemontinn.com](http://fryemontinn.com)



### McKinley Edwards Inn

Charming historical inn with stunning views of the Smoky Mountains, clean, comfortable rooms, delicious breakfast. 208 Arlington Ave. Bryson City, NC 28713 828-488-9626 [mckinleyedwardsinn.com](http://mckinleyedwardsinn.com)



### Sleep Inn

One mile from Great Smoky Mountains Railroad. Minutes from Cherokee Indian Reservation, and Harrah's Cherokee Casino. 500 Veterans Blvd. Bryson City, NC 28713 828-488-0326 [sleepinbrysoncitync.com](http://sleepinbrysoncitync.com)



## FRYEMONT INN



NORTH CAROLINA'S HISTORIC INN OVERLOOKING GREAT SMOKY MOUNTAINS NATIONAL PARK

Settle in for a While!



245 FRYEMONT STREET  
BRYSON CITY, NC 28713  
FRYEMONTINN.COM • 828-488-2159  
LISTED IN THE NATIONAL REGISTER OF HISTORIC PLACES

- Rest** Historic main lodge - fireplace suites & cabin - includes
- Relax** 4-course dinner & full country breakfast - fireside bar -
- Rejuvenate** secluded swimming pool

FIRST TIME VISITORS GET

**\$40 Off**

YOUR STAY OF TWO NIGHTS OR MORE, USING PROMO CODE "FIRST" ONLINE.

### NOC Cabins

Mountainside cabins lodging just steps from rafting, biking, hiking, riverside dining, and the Outfitter's Store. 13077 Hwy 19 W Bryson City, NC 28713 828-785-5018 • 800-232-7238 [noc.com](http://noc.com)



### Nantahala Cabins, Inc.

Your Nantahala getaway. Cabin rentals and adventure planning. We specialize in making memories. 580 Nantahala Cabins Ln. Bryson City, NC 28713 828-488-1622 [nantahalacabins.com](http://nantahalacabins.com)



### Calhoun House Inn & Suites

Affordable, 4 and 5-room luxury suites, private baths, private entrances, A/C, king beds, full kitchens, WiFi, HBO. 110 Bryson Ave. Bryson City, NC 28713 828-788-0505 [ed@calhounhouse.com](mailto:ed@calhounhouse.com) [calhounhouse.com](http://calhounhouse.com)



EXPLORE  
**BRYSON CITY**  
— North Carolina —

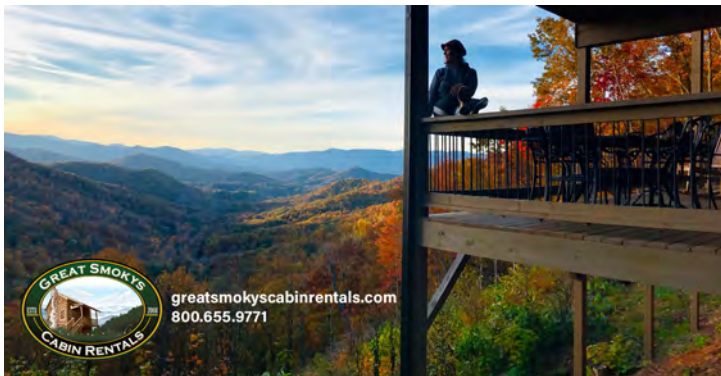
**THE OUTDOOR ADVENTURE CAPITAL  
OF THE  
GREAT SMOKY MOUNTAINS**

*[www.ExploreBrysonCity.com](http://www.ExploreBrysonCity.com)*



**828-488-7857**





greatsmokycabinrentals.com  
800.655.9771

## LODGING

### Great Smokys Cabin Rentals

We have vacation cabins for everyone, hot tubs, game rooms, spectacular views, pets welcome.  
1181 Main St.  
Bryson City, NC 28713  
828-488-4630 • 800-655-9771  
gscrnc.com

### Sky Ridge Yurts

Ready to break out of the regular cabin routine? Come experience Sky Ridge.  
200 Sky Ridge Dr.  
Bryson City, NC 28713  
704-701-5696  
skyridgeyurts.com

### Smoky Mountain Modern

Modern architecture and style in vacation rentals, new construction, or home sales.  
162 Everett St.  
Bryson City, NC 28713  
828-538-4225  
info@smokymountainmodern.com

### Two Rivers Lodge

American Family Owned & Operated motel, cabins, kitchenettes, porches, pool, riverside, park, bonfire, pavillion, grills, fishing.  
5280 Ela Rd.  
Bryson City, NC 28713  
828-488-2284  
tworiverslodgenc.com

### Watershed Cabins

Vast selection of vacation rentals: simple woodsy cabins to luxury lakefront homes. Pet friendly.  
162 Everett St.  
Bryson City, NC 28713  
888-604-3075  
watershedcabins.com

### Stonewood Cabins & Watershed Resort

Luxury vacation home rental agency with properties outside of Bryson City, including Watershed Resort.  
33 Island St.  
Bryson City, NC 28713  
828-222-0802  
watershedresort.com



## CAMPGROUND

### Brookside Campground & Rafting

Whitewater rafting available from campground. Creekside sites, country store.  
764 U.S. Hwy 19  
Nantahala, NC 28781  
828-321-5209 • 800-848-7238  
brooksiderafting@gmail.com  
brooksiderafting.com

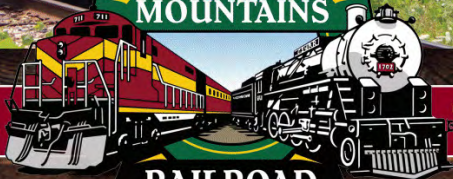
# ALL ABOARD!

*Scenic Excursions* **DIESEL & STEAM LOCOMOTIVES!**



GREAT SMOKY  
MOUNTAINS

*Book*



*Now!*

**RAILROAD**

**BRYSON CITY, NC**

[www.GSMR.com](http://www.GSMR.com) | 800.872.4681

## LODGING

### CAMPGROUND

#### Deep Creek Tube Center & Campground

Camping for travel trailers, RVs, tents, rental cabins, tubing, gem mining, store, playground.

1090 W Deep Creek Rd.  
Bryson City, NC 28713  
828-488-6055

[deepcreekcamping.com](http://deepcreekcamping.com)



#### Gorgeous Stays

"Glampground" nestled in the scenic Nantahala

Gorge. 11 units

including fun-themed tiny homes, huge safari tents, a yurt, and more.

11044 Hwy 19 W  
Bryson City, NC 28713  
828-421-2282

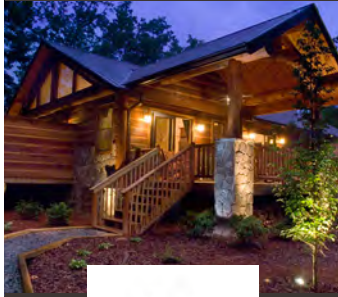
[www.gorgeousstays.com](http://www.gorgeousstays.com)



#### Rolling Thunder

(see rafting)

Wildwater (see rafting)



Bryson City, NC  
Reservations: 828.222.0802  
[stonewoodcabins.com](http://stonewoodcabins.com)

## OUTDOOR ACTIVITY

#### Great Smoky Mountains Railroad

Join us on board the Great Smoky Mountains Railroad for a fantastic journey!

45 Mitchell St.  
Bryson City, NC 28713  
828-586-8811 • 800-872-4681  
[gsmr.com](http://gsmr.com)



#### NOC Outdoor Adventure

Enjoy 500-acres of outdoor adventure from rafting, biking, zip lining, wilderness and paddling courses, and more!

Pets welcome on campus.  
13077 Hwy 19 W  
Bryson City, NC 28713  
828-785-5108  
[noc.com](http://noc.com)



#### Indian Creek Falls

An easy one-mile hike from Deep Creek Campground in the Great Smoky Mountains National Park brings you to this gorgeous 60-foot waterfall.

[www.nps.gov/grsm/playyourvisit/indian-creek-toms-branch-falls.htm](http://www.nps.gov/grsm/playyourvisit/indian-creek-toms-branch-falls.htm)



#### Appalachian Trail to Charlie's Bunion

4 miles, moderate/difficult Trailhead: Newfound Gap parking area. This four-mile stretch offers spectacular views of the Smokies.  
[appalachiantrail.org](http://appalachiantrail.org)



#### Nantahala Byway

The Nantahala Byway runs from Whittier to Murphy via the Nantahala Gorge. 43 miles • 1.5 hours  
Travels through Swain, Jackson, Graham and Cherokee counties.



### Deep Creek

Fishing, waterfalls, hiking and horse trails, tubing, picnicking, and campground open May-October.



### JEEP EXCURSION

### Wildwater Nantahala Gorge Adventure Center

Fully guided Jeep tours on the Nantahala and Big Pigeon Rivers. 10345 Hwy 19 W Bryson City, NC 28713 866-319-8870 [wildwaterrafting.com](http://wildwaterrafting.com)



### Carolina Outfitters Whitewater Rafting

Call us for Nantahala & Ocoee River Family Whitewater Rafting Adventures, Vacation Rental Houses, Gemstone Mining, Zip Lining, Horseback Riding & Smoky Mountain Train Tours. 715 U.S. Hwy 19 Topton, NC 28781 828-488-6348 • 828-488-6345 [carolinaoutfitters.com](http://carolinaoutfitters.com)

### Brookside Campground & Rafting

Whitewater rafting available from campground. Creekside sites, country store. 764 U.S. Hwy 19 Nantahala, NC 28781 828-321-5209 • 800-848-7238 [brooksiderafting@gmail.com](mailto:brooksiderafting@gmail.com) [brooksiderafting.com](http://brooksiderafting.com)

### RAFTING/KAYAKING

### Nantahala Outdoor Center

Family-friendly rafting with the best; named "#1 Vacation with a Splash!" by Good Morning America. 13077 Hwy 19 W Bryson City, NC 28713 828-785-5082 • 800-232-7238 [noc.com](http://noc.com)



### Rolling Thunder River Company

The preferred rafting company for over 40 years. Family-friendly trips daily during season. Book online. 10160 Hwy 19 W Bryson City, NC 28713 800-408-7238 [rollingthunderriverco.com](http://rollingthunderriverco.com)

## NANTAHALA RIVER RAFTING



Family whitewater rafting adventures on the Nantahala and Ocoee Rivers! Certified guides. Vacation Rental Houses. Horseback Riding. Zip Lining. Gemstone Mining. Smoky Mtn. Train Tours. Great discounts and group rates.

[CarolinaOutfitters.com](http://CarolinaOutfitters.com)

**828-488-6345**

## RAFTING/KAYAKING

### Wildwater Nantahala Gorge Adventure Center

Fully guided, guide assisted, and rental trips on Nantahala, Ocoee, Big Pigeon, and Chattooga Rivers.  
10345 Hwy 19 W  
Bryson City, NC 28713  
866-319-8870  
[wildwaterrafting.com](http://wildwaterrafting.com)



### Deep Creek Tube Center & Campground

1090 W Deep Creek Rd.  
Bryson City, NC 28713  
828-488-6055  
[deepcreekcamping.com](http://deepcreekcamping.com)



### Wildwater Nantahala Gorge Adventure Center

With 5 full length zipline courses across GA, SC, TN, and NC, plus 2 popular Kid Zips for the youngest flyers. Wildwater has you covered.

10345 Hwy 19 W  
Bryson City, NC 28713  
866-319-8870  
[wildwaterrafting.com](http://wildwaterrafting.com)



## ZIPLINING

### Treetop Adventure Nets

The nation's first 1001 net-based aerial playground fun for the whole family!  
13077 Hwy 19 W  
Bryson City, NC 28713  
828-785-5018  
[noc.com](http://noc.com)



### Nantahala Outdoor Center

Discover NC's premier zip line adventure! "One of the Best Outfitters on Earth" -National Geographic Adventure.  
13077 Hwy 19 W  
Bryson City, NC 28713  
828-785-5018  
[noc.com](http://noc.com)





Road to Nowhere  
Bryson City, NC

# #1 VACATION WITH A **SPLASH**



**NOC**  
NANTHALA OUTDOOR CENTER

**500 Acres of Adventure Featuring:**  
Whitewater Rafting • Zip Line Tours  
Mountain Biking • Aerial Adventure Park  
Riverside Dining • Shopping • Lodging

**noc.com 828.785.5082**

## REAL ESTATE



### Good Life Real Estate

Your Boutique Mountain Firm Mountain and Lake, Luxury Log/Modern Homes. Vacation Rental/Second Home Investments. Land, New Construction.  
162 Everett St.  
Bryson City, NC 28713  
828-318-8811  
[goodliferealestateco.com](http://goodliferealestateco.com)

## SHOPPING

### NOC Outfitter's Store



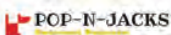
The nation's most-famous paddlesports store. Offers apparel, footwear and equipment for hiking and outdoor lifestyles.  
13077 Hwy 19 W  
Bryson City, NC 28713  
828-488-7230  
[noc.com](http://noc.com)

### Lazy Bear Trading Company

Located in Railroad Square at train depot. Large assortment of Black Bear items, locally made rope rugs and Indian items. Hours coincide with train.  
96 Greenlee St.  
Bryson City, NC 28713

### Pop-N-Jacks

#### Gourmet Popcorn



If you haven't tried Pop-N-Jacks gourmet popcorn, you don't know Jack.  
225-B Everett St.  
Bryson City, NC 28713  
828-620-3931  
[pop-n-jacks.com](http://pop-n-jacks.com)

### Uncle Bunky's T-Shirt Shop

T-Shirts make memories!  
Caps, bags, stuffed animals, novelties  
150 Everett Street  
Bryson City 28713  
828-788-1550 •  
[facebook.com/Uncle-Bunkys-T-Shirt-Shop](https://facebook.com/Uncle-Bunkys-T-Shirt-Shop)

### Wesser General Store



One-stop shop for snacks, sundries, souvenirs, beer and wine.  
13077 Hwy 19 W  
Bryson City, NC 28713  
828-488-7226  
[noc.com](http://noc.com)

### See Heavenly Fudge Depot on page 27

## VISITOR INFORMATION



### Swain County Visitor Center

Visitor information, maps, brochures, travel guides, Heritage Museum, National Park Gift Shop, public restrooms, and lodging information.  
2 Everett St.  
Bryson City, NC 28713  
828-488-3681 • 800-867-9246  
[greatsmokies.com](http://greatsmokies.com)



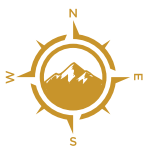
[WatershedCabins.com](http://WatershedCabins.com)

Bryson City, NC  
Reservations: 828.479.0871





# CHEROKEE



33 miles ← from Waynesville

16 miles → to Sylva

- **37 miles from Franklin, NC**
- **Home of the Eastern Band of Cherokee Indians**
- **Cherokee** - Hosts an array of yearly festivals and events steeped in art, culture and deep history of the tribe.
- **Hidden Gems / Popular Attractions:**
- ★ **Fire Mountain Trails** - Multi-use trail system made for mountain biking, hiking or running, 10.5 miles.
- ★ **Oconaluftee Islands Park** - Great place for a Picnic, Grilling and Wading. Excellent walking trail.

[visitchokeenc.com](http://visitchokeenc.com)  
[cherokeesmokies.com](http://cherokeesmokies.com)

## BLUEWAYS

### Oconaluftee River

Oconaluftee, considered sacred waters by the Cherokee, is a beautiful freestone river that drops 2,000 feet over 10 miles. Wading, tubing and canoeing are all popular activities found on the river. It's most famous for its abundant and healthy rainbow, brook and brown trout. In fact, it holds the North Carolina Record Brown Trout, weighing in at 15.9 pounds. [smokymountainblueways.com](http://smokymountainblueways.com)



### Oconaluftee Indian Village Living Museum

Living history museum documenting 18th-century Indian village. 218 Drama Rd. Cherokee, NC 28719 800-438-1601 [visitchokeenc.com](http://visitchokeenc.com)



## DINING

### Harrah's Cherokee Casino and Resort



#### Brio Italian Grille

Authentic Northern Italian specialties, including pizza, oven-roasted steaks, chops, fresh fish and made-to-order pastas. *Harrah's Cherokee Casino and Resort*

#### Gordon Ramsay Food Market

Offers breakfast, lunch, and dinner, as well as "market-style" options. *Harrah's Cherokee Casino and Resort*

#### Ruth's Chris Steak House

USDA Prime steaks served in Ruth's Chris' signature style—sizzling hot on a 500-degree plate. *Harrah's Cherokee Casino and Resort*

## CASINO

### Harrah's Cherokee Casino and Resort

Features slots, traditional table games, ten restaurants, shopping, 1,833 guest rooms, computer center, spa, 3,000 seat events center, premier entertainment. 777 Casino Dr. Cherokee, NC 28719 828-497-7777 • 877-811-0777 [harrahscherokee.com](http://harrahscherokee.com)



## CULTURAL/MUSEUM

### Mountain Farm Museum

Collection of historical log buildings and artifacts. 150 U.S. 441 North Oconaluftee Visitor Center Cherokee, NC 28719 828-497-1904 [nps.gov/grsm](http://nps.gov/grsm)



### Museum of the Cherokee Indian

Artifacts from a culture nearly lost—waiting to be discovered. 589 Tsali Blvd. Cherokee, NC 28719 828-497-3481 [cherokeemuseum.org](http://cherokeemuseum.org)



### Guy Fieri's Kitchen + Bar Wicked Weed Brewpub

E Sports Zone Noodle Bar Lobby Café Earl of Sandwich Starbucks Dunkin' Donuts Express *Harrah's Cherokee Casino and Resort*

#### Selu Garden Café

Southern, breakfast bar/ menu, soup, salad, sandwich bar Mon–Fri. Brunch Sat–Sun in Hotel until 2:30pm.

#### Soundbytes

Ultra-Star Multi-Tainment Center: American cuisine, sports bar, 11am–2am Fri–Sat, 11am–Midnight Sun–Thurs.

## FAMILY ATTRACTION

### Oconaluftee Indian Village

Walk among the living culture of the Cherokee, circa 1750.

218 Drama Rd.  
Cherokee, NC 28719  
828-497-2111 • 866-554-4557  
[cherokeeadventure.com](http://cherokeeadventure.com)



### Mountainside Theatre

Home to Unto These Hills, a historic outdoor drama that runs in the summer. In the spring and fall, it is host to Alice in Wonderland and Dracula.

688 Drama Rd.  
Cherokee, NC 28719  
828-497-2111  
[cherokeehistorical.com](http://cherokeehistorical.com)

### Ultra Star Multi-Tainment Center

Harrah's Cherokee, hottest new arcade games, Strikes Lounge, boutique bowling, billiards, packages, events, parties.

777 Casino Dr.  
Cherokee, NC 28719  
828-497-8818  
[ultrastarc.com](http://ultrastarc.com)



## FISHING/HIKING/GUIDES

### EBCI Fisheries & Wildlife Management

We invite you to fish in our ancestral homelands. Waters are cold, fishing is great.

1840 Painttown Rd.  
Cherokee, NC 28719  
828-788-3013  
[fishcherokee.com](http://fishcherokee.com)



### Rivers Edge Outfitters

Fishing gear, clothing, guide trips, rods, reels, bait, flies, classes, permits, flyfishing.

61 Big Cove Rd.  
Cherokee, NC 28719  
828-497-9300  
[wncfishing.com](http://wncfishing.com)



## GOLF COURSE

### Sequoyah National Golf

18 Hole Robert Trent Jones II Design - Renovated 2020. 45 minutes west of Asheville, heart of Great Smoky Mountains. Open to the public. Book your tee times @ [www.sequoyahnational.com](http://www.sequoyahnational.com)  
79 Cahons Rd.  
Whittier, NC 28789  
828-497-3000



## LODGING

### Fairfield Inn and Suites

Located in the Casino District. Across the street from Harrah's Casino on Hwy 19. Amenities: Indoor pool, exercise facility, Complimentary hot breakfast. 568 Paint Town Rd.  
Cherokee, NC 28719  
828-497-0400 • 800-228-2800  
[marriot.com/avlck](http://marriot.com/avlck)

### Hampton Inn Cherokee

Newly remodeled. Close to Harrah's Casino. Open year-round. Refrigerators, microwaves in every room. 185 Tsalagi Rd./Hwy 19  
Cherokee, NC 28719  
828-497-3115 • 800-426-7866  
[cherokee.hamptoninn.com](http://cherokee.hamptoninn.com)

### Rolling Hills Lodge

Rolling Hills Lodge in the heart of Cherokee's Cultural District, king, queen or two of each, cable, WiFi, refrigerator. 739 Tsail Blvd.

Cherokee, NC 28719  
828-497-5371  
[rollinghillslodge.com](http://rollinghillslodge.com)

## CAMPGROUND

### Fort Wilderness RV Park and Campground

### Fort Wilderness RV Park

Pull-thru's, bathhouses, direct TV, cabins, basketball, shade, paved, horseshoes, peaceful, pool, playground, security, gameroom, Wifi, pavilion. 284 Ft. Wilderness Rd.  
Cherokee, NC 28789  
828-497-9331  
[fortwilderness.net](http://fortwilderness.net)



PUT ON YOUR  
**PARTY HAT**

# TWO CASINOS TWICE THE FUN

Enjoy over 3,000 games, 1,800 hotel rooms plus dining, shopping and more at Harrah's Cherokee Casino Resort. Or, take in 1,000 slots, 70 tables games, and a 300-room hotel tower at the perfect gambler's getaway of Harrah's Cherokee Valley River Casino & Hotel in Murphy, NC.

Choose your perfect getaway.



@HarrachsCherokee

@HarrachsValRiv

**Harrah's**  
**CHEROKEE**  
CASINO RESORT

**Harrah's**  
**CHEROKEE**  
**VALLEY RIVER**  
CASINO & HOTEL

Must be 21 or older to enter casino floor and to gamble, and must present a valid state or federal photo ID upon request. Know When To Stop Before You Start. © Gambling Problem? Call 1-800-522-4700. An Enterprise of the Eastern Band of Cherokee Indians. ©2022, Caesars License Company, LLC.

## CAMPGROUND

### Smokemont

Open year-round weather permitting. Camping, picnic, restrooms, trailer space, drinking water, handicap-accessible, hiking trail, horse trail, fishing, scenic views, information, fee required. [recreation.gov/camping/campgrounds/232486](http://recreation.gov/camping/campgrounds/232486)



### Bonfire

Spend an evening by a roaring bonfire among Cherokee storytellers and dancers as they tell tales and dance traditional dances of days gone by. [visitchokeenc.com/events/detail/Cherokee-bonfire/](http://visitchokeenc.com/events/detail/Cherokee-bonfire/)

### Mingo Falls

This 200-foot scenic waterfall is a five-minute walk from the Mingo Falls Campground on the Cherokee Indian Reservation. [www.nps.gov/grsm/planyourvisit/mingo-falls.htm](http://www.nps.gov/grsm/planyourvisit/mingo-falls.htm)



## OUTDOOR ACTIVITY

### Entrance to the Blue Ridge Parkway and Great Smoky Mountains National Park

Open year-round weather permitting.



### Soco Falls

Just north of Cherokee, this waterfall runs down the slope of Soco Bald. <https://www.facebook.com/SocoFalls>



**THOUSANDS OF ACRES DEDICATED TO THE SOCIALLY DISTANT.**

  
**CHEROKEE**  
north carolina

VisitCherokeeNC.com | 800.438.1601



Mingo Falls  
Cherokee, NC

## OUTDOOR ACTIVITY

### HORSEBACK RIDING



#### Smokemont Riding Stables

Authorized NPS Concessioner offering guided horseback riding within the Great Smoky Mountain National Park.  
135 Smokemont Riding Stables Rd.  
(off Hwy 441)  
Cherokee, NC 28719  
828-497-2373  
[smokemontridingstable.com](http://smokemontridingstable.com)

## SHOPPING

#### Native American Craft Shop

Specializing locally handmade Cherokee baskets, pottery, wood, stone carvings, southwest Indian jewelry, Pendleton blankets, t-shirts.  
1847 Tsali Blvd.  
Cherokee, NC 28719  
828-497-6790  
[greatsmokiesart.com](http://greatsmokiesart.com)

#### Qualla Arts and Crafts Mutual

Shop over 3,000 authentic baskets, jewelry, carvings and more made by Cherokee Indian co-op members.  
645 Tsali Blvd.  
Cherokee, NC 28719  
828-497-3103  
[quallaartsandcrafts.com](http://quallaartsandcrafts.com)



#### Traditional Hands Native American Jewelry & Art Gallery



Gallery & Jewelry shop featuring master silversmith General B Grant & other native artist from several tribes.  
1045 Tsalagi Rd.  
U.S. 19/U.S. 441 (Bus)  
Cherokee, NC 28719  
828-554-5884  
[traditionalhands.com](http://traditionalhands.com)

## VISITOR INFORMATION

#### Cherokee Chamber of Commerce



Visit us at [cherokeesmokies.com](http://cherokeesmokies.com) to download your visitor's guide.  
828-788-0034  
[cherokeesmokies.com](http://cherokeesmokies.com)

#### Cherokee Welcome Center



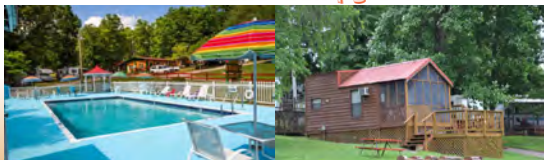
Come experience 11,000 years of soul-stirring Cherokee history, culture, art, legend, tradition and events.  
498 Tsali Blvd.  
Cherokee, NC 28719  
800-438-1601  
[visitcherokeenc.com](http://visitcherokeenc.com)

#### EBCI Fisheries & Wildlife Management



We invite you to fish in our ancestral homelands. Waters are cold, fishing is great.  
1840 Painttown Rd.  
Cherokee, NC 28719  
828-788-3013  
[fishcherokee.com](http://fishcherokee.com)

## Fort Wilderness RV Park and Campground



### Discount Camping-Cabins • Pull-Thrus • Outdoor Pool

284 Wilderness Road  
Whittier, NC 28789

828.497.9331 • [Fortwilderness.net](http://Fortwilderness.net)



# TRADITIONAL HANDS



WAMPUM  
SILVER  
TURQUOISE

## NATIVE AMERICAN JEWELRY



US HWY 19  
1045 TSALAGI RD  
CHEROKEE, NC 28719  
PHONE (828) 554.5884

[www.TRADITIONALHANDS.com](http://www.TRADITIONALHANDS.com)





# FONTANA, ROBBINSVILLE & LAKE SANTEETLAH



31 miles ← from Bryson City  
.....  
56 miles → to Murphy

- **46 miles from Franklin, NC**
- **Entrance to spectacular Cherohala Skyway, a National & State Scenic Byway**

- **3 Vibrant Communities:**

- ★ **Fontana Dam** - Fontana Dam is ranked among the most beautiful dams of the world & the highest concrete dam east of the Rockies. Beautiful views at visitor center.
- ★ **Robbinsville** - Quaint town located in the foothills of NC magnificent Great Smoky Mountains. Friendly atmosphere & outdoor adventure abound.
- ★ **Lake Santeetlah** - A water wonderland of camping, boating & hiking.

- **Hidden Gems / Popular Attractions:**

- ★ **Tail of the Dragon** - America's #1 spot for sport car and motorcycle enthusiasts and widely regarded as "the destination!" 11-miles with 318 curves.  
*tailofthedragon.com*
- ★ **Cherohala Skyway** - This scenic 43-mile road stretches from the mountains of Robbinsville, North Carolina into Tennessee backcountry. *cherohala.com*
- ★ **Joyce Kilmer Memorial Forest** - Impressive 3800-acre wilderness. 5410 Joyce Kilmer Rd. *fs.usda.gov*

**grahamcountytravel.com**  
**townofrobbinsville.com**  
**tva.com**

## AGRITOURISM

### Graham County Farmer's Market

Local farmers and crafters. Free. Saturdays July–October, 8am–12noon. Parking lot of Graham County Library. 80 Knight St. Robbinsville, NC 28771 828-479-8796

## ARTS/CRAFTS

### Stecoah Valley Cultural Arts Center

Gallery, historic auditorium, commercial kitchen, arts, crafts, and culinary classes, fall festival, summer concerts. 121 School House Rd. Robbinsville, NC 28771 828-479-3364 [stecoahvalleycenter.com](http://stecoahvalleycenter.com)

## BLUEWAYS

### The Cheoah River

The Cheoah River, 20 miles long, is located in the extreme southwestern corner of North Carolina, near Robbinsville. Unique in its features, the Cheoah is one of the most physically demanding rivers in the world and the perfect challenge for the most adventurous paddlers. [smokymountainblueways.com](http://smokymountainblueways.com)



### Lake Santeetlah

The lake hosts a variety of fish including smallmouth bass, largemouth bass, walleye, crappie, bream, and lake trout. There are more than fifty primitive campsites scattered around the lake that include a picnic table and fire ring. [smokymountainblueways.com](http://smokymountainblueways.com)



## HISTORIC TAPOCO LODGE



Established in 1930, Tapoco situated on 120 acres in the lush mountain region of the Nantahala National Forest on the banks of the cascading Cheoah River. Adventures like hiking, rafting, kayaking, fishing, mountain biking, and winding roads are plentiful. After your day of adventure, experience sanctuary in one of our historic rooms with modern conveniences. Later on, enjoy riverside dining or an evening by the fire pits.



Cheoah Dining open for breakfast daily 8-10 am  
Tapoco Tavern open daily 11 am - 8 pm



828-498-2800 ROBBINSVILLE, NORTH CAROLINA

[info@tapoco.com](mailto:info@tapoco.com) / [www.tapoco.com](http://www.tapoco.com)



After a long day of  
swimming, fishing, and hiking,  
try some nothing.

800-849-2258 | [fontanavillage.com](http://fontanavillage.com)

#### CULTURAL/MUSEUM

##### **Graham County Museum of Prehistoric Relics**

A collection of prehistoric artifacts from North, South and Central America.

3204 Fontana Rd.  
Fontana Dam, NC 28733  
828-479-3677

[ncmuseums.org/find-a-museum/?ID=1650](http://ncmuseums.org/find-a-museum/?ID=1650)

##### **Junaluska Memorial**

Displays dedicated to preserving Cherokee Indian history and culture.

1 Junaluska Dr.  
Robbinsville, NC 28771  
828-479-4727

##### **TVA Fontana Dam Museum & Visitor's Center**

1942, highest dam east of Rockies. The AT crosses over dam with showers, hikers call it the Fontana Hilton.

71 Fontana Dam Rd.  
Fontana Dam, NC 28733  
828-498-2234  
[tva.com](http://tva.com)

#### DINING

##### **Dragon's Den Grill**

Breakfast, lunch, serving our famous dragon burger, chicken, BBQ, sandwiches & more, including daily specials!

17548 Tapoco Rd.  
Robbinsville, NC 28771  
800-889-5550  
[dealsgap.com](http://dealsgap.com)



### Mountview Bistro

Elegant, relaxing atmosphere, freshest local vegetables and meats, baked goods, and desserts plated to perfection.  
300 Woods Rd.  
Fontana Dam, NC 28733  
828-498-2115  
[fontanavillage.com](http://fontanavillage.com)



### Deal's Gap Motorcycle Resort

Store, grill, motel, Wifi, gas station, merchandise, local information, fire pit, March–November.  
17548 Tapoco Rd.  
Robbinsville, NC 28771  
800-889-5550  
[dealsgap.com](http://dealsgap.com)



### Tapoco Tavern

Riverside dining, full outdoor bar, trout, pizza, burgers, wings, steaks, salads, groups welcomed, and covered parking.  
14981 Tapoco Rd.  
Robbinsville, NC 28771  
828-498-2800  
[tapoco.com](http://tapoco.com)



### Rivers Edge Treehouse Resort

Six luxury treehouses, riverfront, covered parking, king beds, Wi-Fi, refrigerators, TV, grills and firepits.  
195 Old U.S. 129  
Robbinsville, NC 28771  
828-735-2228  
[riversedgetreehouses.com](http://riversedgetreehouses.com)



### Wildwood Grill

Dine on the patio or inside, wonderful food, friendly service, take-out pizza! Open seasonally.  
300 Woods Rd.  
Fontana Dam, NC 28733  
828-498-2211  
[fontanavillage.com](http://fontanavillage.com)



### Snowbird Mountain Lodge

A/C, private bath, no smoking, fireplaces, credit cards. 23 rooms. Gourmet meals offered. Reservations required.  
4633 Santeelah Rd.  
Robbinsville, NC 28771  
828-479-3433 • 800-941-9290  
[snowbirdlodge.com](http://snowbirdlodge.com)

## LODGING

### Fontana Village Resort & Marina

Lodge, cabins, campground, shopping, restaurants, entertainment, disc golf, Lazy River, marina, groups. Pets welcome.  
300 Woods Rd.  
Fontana Dam, NC 28733  
828-498-2211 • 800-849-2258  
[fontanavillage.com](http://fontanavillage.com)



## OUTDOOR ACTIVITY

### Cherochala Skyway

Connecting the Cherokee National Forest to the Nantahala National Forest, this clean, smooth highway encourages you to open up your sports car or pause your RV for a sandwich and the beautiful sights.  
20 miles • 45 minutes  
[ncdot.gov/travel/scenic](http://ncdot.gov/travel/scenic)



### Historic Tapoco Lodge

Where adventure and sanctuary meet, historical ambiance with modern conveniences, tavern, lodging, 11 hiking trails, Cheoah River releases, and more.  
14981 Tapoco Rd.  
Robbinsville, NC 28771  
828-498-2800  
[tapocolodge.com](http://tapocolodge.com)



### The Benton MacKaye Trail

The trail is approximately 300 miles in length and starts 0.2 miles down the Appalachian Trail from Springer Mountain, GA traveling north through TN and NC. The "BMT" features many scenic views of surrounding mountains, water falls, streams and wildlife. For more information visit [bmta.org](http://bmta.org) and Facebook.

OUTDOOR ACTIVITY

**Fontana Marina  
Excursions &  
Boat Rentals**



Rental choices include pontoon boats, canoes, kayaks, and paddle boards. Pontoon Boat Shuttle Services are available for hikers and trout fishermen wanting to explore Eagle Creek, Hazel Creek, or any of the North Shore of the Fontana Lake. Get out on the Southern Boundary of the Great Smoky Mountain National Park with easy access to the mountains or just a short trip back to luxury of the Fontana Village Resort. Pick-up and drop-off services are available. 828-498-2129

**Nantahala Byway**



The steep walls that frame the Nantahala Gorge are an impressive site you'll tour as part of this swirling byway. Nearby, the Nantahala River has become legendary for its whitewater. Just depart from Marble, head east and don't stop until you pass Wesser. 43 miles • 1.5 hours  
Travels through Cherokee, Graham, Jackson & Swain counties.  
[ncdot.gov/travel/scenic](http://ncdot.gov/travel/scenic)

**Snowbird  
(Nantahala  
National Forest)**  
Open year-round  
Picnic, restrooms,  
fishing.



**Cheoah Point (Nantahala  
National Forest)**  
Open April-October.  
Camping, picnic, restroom,  
trailer space, drinking water,  
hiking trail, boat ramp, fishing,  
fee required.

**Horse Cove (Nantahala  
National Forest)**  
Open year-round  
In winter no water or fee.  
Camping, restrooms, trailer  
space, drinking water, fishing,  
fee required.

**Cheoah &  
Calderwood Lakes**  
Each 7+ miles,  
boating, flat-  
water kayaking &  
canoeing. Harrison  
Ford jumped off Cheoah Dam  
in the movie "The Fugitive".



GRAHAM COUNTY, NORTH CAROLINA

Discover <sup>THE</sup> Secret  
SIDE OF THE SMOKIES

LEARN MORE HERE!



474 RODNEY ORR BYPASS ROBBINSVILLE, NC 28771  
YOURNATURALDESTINATION.COM

## OUTDOOR ACTIVITY

### Joyce Kilmer (Nantahala National Forest)

Open year-round  
Picnic, restroom,  
drinking water,  
hiking  
trail, information.



### Cable Cove (Nantahala National Forest)

Open April-October.  
Camping, picnic, restrooms,  
trailer space, drinking  
water, boat ramp, fishing,  
fee required.

### Sassafras Falls

Follow a 3.5-mile trail to multiple  
wide, steep falls about 45 feet  
high.

### Big Snowbird Trail

12.7 miles, difficult, fishing  
Trailhead: Big Snowbird  
Road. The first four miles are  
recommended for  
day hikes.

### Tsali (Nantahala National Forest)

Open April-October.  
Off NC 28 past Bryson City, or  
if coming from Robbinsville NC  
143 until you reach NC 28, go  
east. Entrance on north side of  
NC 28, well-marked. Camping,  
picnic, trailer space, showers,  
drinking water, hiking trail,  
horse trail, bike trail, boat ramp,  
fishing, fee required.



### Rattler Ford Group Campground (Nantahala National Forest)

Open mid-April  
– mid-October. Showers,  
hiking trail, fishing, reservations  
required. Four campsite areas  
that accommodate around 25  
persons each for tent camping.  
*ReserveUSA.com* or  
877-444-6777.



### Yellow Creek Falls

Travel U.S. 129 North from  
Robbinsville. Go two miles  
past the Yellow Creek Road  
intersection and the parking  
area and trailhead/sign will be  
on the right. Walk 0.33 mile to  
falls.

### Joyce Kilmer Memorial Trail

2 miles, easy  
Trailhead: Joyce Kilmer  
Memorial Forest parking lot.  
Joyce Kilmer Forest, the last  
remnant of virgin forest in the  
Southern Appalachians, offers  
a spectacular two-mile loop  
trail.

### Maple Springs Observation Point

800 feet, easy,  
handicap-accessible  
Trailhead: Maple Springs  
Observation Area. Maple  
Springs offers an unparalleled  
view of the Smokies, especially  
during the fall color season.

### Waterfall on Tellico River

A 0.5-mile trail to two large  
cascading waterfalls, separated  
by a short run, with an overall  
height of about 45 feet.



## OUTDOOR ACTIVITY

### Fontana Village & Tapoco Lodge Trails

The individual trails vary widely in their width, steepness, and technical difficulty. Describing one distinct route here is impossible because this network of trails crisscrosses all around the properties, totaling 27 & 31 miles respectively.



### Fontana Lake

Offers best smallmouth bass fishing. Enjoy boating, floating, and kayaking. Hikers can enjoy views of the lake from Clingmans Dome. [smokymountainblueways.com](http://smokymountainblueways.com)



## SHOPPING

### Wehrloom Honey

Natural, unadulterated raw honey, health benefits as nature intended, handmade lotions, soaps, beeswax candles, more. 257 Willie Colvin Rd. Robbinsville, NC 28771 828-735-2300 [wehrloom.com](http://wehrloom.com)



### Wehrloom Honey Winery

Variety of mead wines (honey-based wines)

## VISITOR INFORMATION

### Fontana Dam & Visitor Center

Highest dam east of Rockies. The AT crosses over dam with showers, hikers call it the Fontana Hilton. 71 Fontana Dam Rd. Fontana Dam, NC 28733 828-498-2234 [tva.com](http://tva.com)

### Graham County Travel & Tourism

Remote landscapes and outdoor adventure await. Stop by for maps and brochures to play or extend your stay! 474 Rodney Orr Bypass Robbinsville, NC 28771 828-479-3790 • 800-400-3790 [grahamcountytravel.com](http://grahamcountytravel.com)



### Tail of the Dragon

Motorcycle & sport car information for Tail of the Dragon, Cherohala Skyway, Moonshiner 28, Devils Triangle and more. 17555 Tapoco Rd. Robbinsville, NC 28771 828-479-8400 • 800-768-7129 [tailofthedragon.com](http://tailofthedragon.com)



## Fontana Dam, NC

### **Town of Lake Santeetlah Travel Development Authority**

Adventure awaits within remote mountain forests bordering the Great Smoky Mountains. Lakefront vacation rental homes.  
16 Marina Dr.  
Lake Santeetlah, NC 28771  
828-479-8190  
[discoversanteetlah.com](http://discoversanteetlah.com)  
[townoflakesanteetlah.com](http://townoflakesanteetlah.com)

### **Town of Robbinsville**

Robbinsville is the perfect destination for folks wanting outdoor adventure, beautiful lakes and mountain culture.  
4 Court St.  
Robbinsville, NC 28771  
828-479-3250  
[townofrobbinsville.com](http://townofrobbinsville.com)

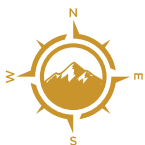


## Lake Santeetlah, NC



# FRANKLIN & NANTAHALA

Buck's Creek  
Franklin, NC



24 miles

← from

Highlands

50 miles

→ to

Bryson City

- **Only 2.5 hours from Atlanta, Georgia**

- **Gem Capital of the Mountains!**

- **2 Vibrant Communities:**

- ★ **Franklin** - Franklin area is rich in gems & minerals and is known locally as the "Gem Capital of the World".

- ★ **Nantahala** - Located west of Wayah Gap. Nantahala is a Cherokee word which means "Land of the Noonday Sun".

- **Hidden Gems / Popular Attractions:**

- ★ **Wayah Bald Lookout Tower** - Great views of Appalachian Mountains in GA, TN, SC and NC.  
[fs.usda.gov/recarea/nfsnc/recarea/](https://fs.usda.gov/recarea/nfsnc/recarea/)

- ★ **Bartram Trail** - Wallace Branch to William's Pulpit-4.1 mile trail located near Franklin & offers many activity options. Best used March-October. [alltrails.com](http://alltrails.com)

- ★ **Nantahala National Forest** - The largest of four forests in NC comprised of over half a million acres with 600 miles of hiking trails, peaks 5,500 feet. [visitnc.com](http://visitnc.com)

- ★ **Scottish Tartans Museum** - Only Scottish Tartans Museum in the United States. Gift shop & Museum. [scottishtartans.org](http://scottishtartans.org)

[visitfranklinnc.com](http://visitfranklinnc.com)  
[visitsmokies.org](http://visitsmokies.org)

## AGRITOURISM

### **Franklin Tailgate Market**

Variety of only homegrown products such as cheese, plants, eggs, trout, honey and more. The Franklin Farmers Tailgate Market was established in 2001 by a group of organic growers. Saturdays from 8:00am - 12:00pm.  
226 E Palmer St.  
Franklin, NC 28734  
[facebook.com/  
FranklinNCFarmersMarket/](https://www.facebook.com/FranklinNCFarmersMarket/)

### **Skyvue Ranch Alpacas**

Alpacas, llama, animal sales, fiber store, yarn, roving, felt, fleece, scarves, quilts, crafts, books. Call for reservations for tours.  
179 Harvest Cove Rd.  
Franklin, NC 28734  
828-369-0047  
[skyvueranchalpacas.com](http://skyvueranchalpacas.com)

## AIRPORT

### **Macon County Airport**

State-of-the-art airport terminal facility, business development center.  
1241 Airport Rd.  
Franklin, NC 28734  
828-524-5529  
[maconcountyairport.com](http://maconcountyairport.com)

## ANTIQUES/THRIFT

### **Nestfeathers Antiques**

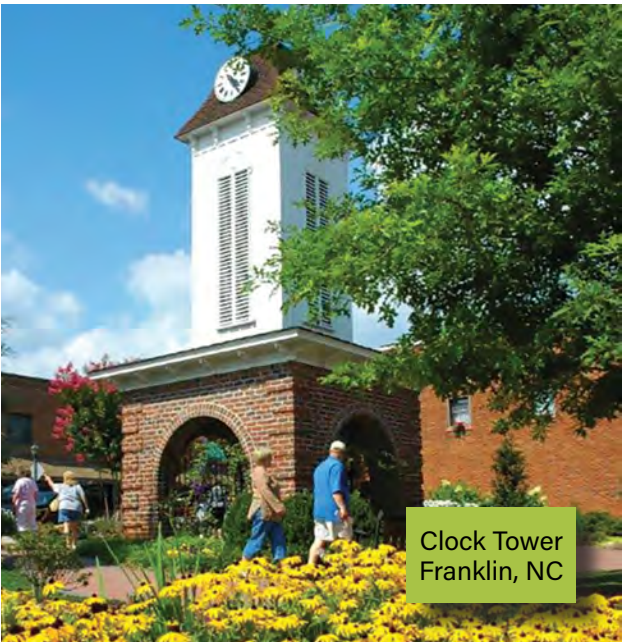
Visit a quaint old building with three floors of wonderful antiques and wonderful prices.  
153 E Palmer St.  
Franklin, NC 28734  
828-349-5476  
[nestfeathersnc.com](http://nestfeathersnc.com)

### **The Classy Flea**

Indoor upscale flea market, climate controlled, 35 plus vendors, ANTIQUES, GOOD STUFF AND COOL JUNK. Open all year Thursday, Friday and Saturday from 9am-5pm.  
51 Union Otto Daycare Rd.  
Franklin, NC 28734  
828-421-7782

### **Whistle Stop Depot**

Antique mall and specialty shops including furniture, country accessories, clothing, jewelry, crafts and food.  
145 River Rd.  
Franklin, NC 28734  
828-349-1600  
[whistlestopmall.com](http://whistlestopmall.com)



Clock Tower  
Franklin, NC

## ARTS/CRAFTS

### Uptown Gallery

Original art by area artists. Classes and workshops available. Call for art association membership benefits.

30 E Main St.  
Franklin, NC 28734  
828-349-4607  
[franklinuptowngallery.com](http://franklinuptowngallery.com)

## BLUEWAYS

### The Little

#### Tennessee River

The Little Tennessee and its immediate watershed comprise one of the richest archaeological areas in the southeastern U.S. The river offers canoeing, fishing and floating.  
[smokymountainblueways.com](http://smokymountainblueways.com)



### Nantahala Lake

Nantahala Lake sits above the Nantahala Gorge and is known for its scenic beauty and crystal-clear waters. The lake offers recreational opportunities that include fishing, swimming, boating, skiing and many other activities.  
[smokymountainblueways.com](http://smokymountainblueways.com)



## BREWERY

### Lazy Hiker Brewing Company

Come get lazy, enjoy craft beer in our taproom, family-friendly, cans/growlers, to-go, food truck on-site.  
188 W Main St.  
Franklin, NC 28734  
828-349-BEER (2337)  
[lazyhikerbrewing.com](http://lazyhikerbrewing.com)



## CULTURE/MUSEUM

### Cowee School Arts & Heritage Center

Music, crafts, heritage, history, traditional food, pottery, mountain, families, weaving, concerts, clogging, arts, festival, bluegrass.

51 Cowee School Dr.  
Franklin, NC 28734  
828-349-1945  
[coweeschool.org](http://coweeschool.org)

### Scottish Tartans Museum

Come discover your heritage at the only Scottish Tartans Museum located outside Scotland. Quality Highland attire & Scottish gifts. NO PETS.

86 E Main St.  
Franklin, NC 28734  
828-524-7472  
[scottishtartans@gmail.com](mailto:scottishtartans@gmail.com)  
[scottishtartansgiftshop.com](http://scottishtartansgiftshop.com)  
[scottishtartansmuseum.org](http://scottishtartansmuseum.org)



### Taste of Scotland and Celtic Festival

Enjoy Everything Scottish: food, clans, parades, pipe bands, music, highland games, children's activities, storytelling and souvenirs. Call or Check Website.  
Franklin, NC 28734  
828-421-7302  
[tasteofscotlandfest.org](http://tasteofscotlandfest.org)



## DINING

### 828Cafe

Serving breakfast and lunch. American food with a Latin touch.  
228 NE Main St.  
Franklin, NC 28734  
828-634-7702  
[828cafe.com](http://828cafe.com)

## DINING

### **Asian King Buffet Sushi Bar & Chinese Cuisine**

Chinese buffet featuring over 40 items plus sushi.  
109 Commons Dr.  
Franklin, NC 28734  
828-349-9800  
[asianking1.com](http://asianking1.com)

### **Cleaver's**

Traditional and unusual burgers.  
349 Westgate Plaza  
Franklin, NC 28734  
828-634-7247  
[cleavers.kitchen](http://cleavers.kitchen)

### **Fat Buddies Ribs and BBQ of Franklin**

Family-Style BBQ, Baby Back Ribs, Smoked Pork, Smoked Beef, Smoked Chicken, Hand-Cut Steaks.  
311 Westgate Plaza  
Franklin, NC 28734  
828-349-4743  
[fatbuddiesribsandbbq.com](http://fatbuddiesribsandbbq.com)

### **Gazebo Creekside Cafe**

Gazebo Creekside Cafe is where the locals eat. Enjoy outdoor dining.  
44 Heritage Hollow  
Franklin, NC 28734  
828-524-8783  
[gazebocreeksidecafe.com](http://gazebocreeksidecafe.com)

### **Honeysuckle Bakehouse**

Bakery that offers made from scratch goodies. We offer breakfast and lunch.  
28 E Main St.  
Franklin, NC 28734  
828-527-0064  
[honeysucklebakehouse.com](http://honeysucklebakehouse.com)

### **Jack The Dipper**

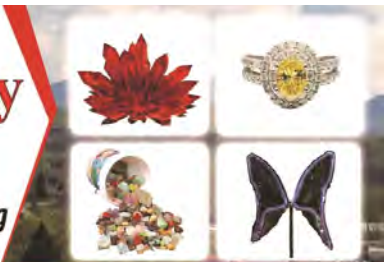
Home of the warm waffle cone.  
1024 Georgia Rd.  
Franklin, NC 28734  
828-349-5798  
[jackthedipper.com](http://jackthedipper.com)

Fine Jewelry Est. 1958

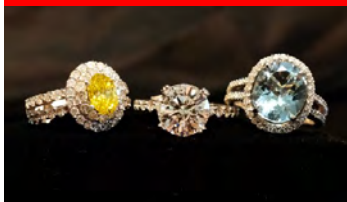
# Ruby City

GEMS & MINERALS  
FABULOUS FREE MUSEUM!

**Jewelry • Lapidary  
Gem Buckets • Stone Cutting  
Healing Stones & Crystals**



**VOTED MACON COUNTY'S  
BEST JEWELRY STORE & MUSEUM 2022!**



[gems@rubycity.com](mailto:gems@rubycity.com)

130 East Main St.  
Franklin, NC

[rubycity.com](http://rubycity.com)  
(828)524-3967



## 10% OFF GEM MINING

Use this coupon and receive 10% off Gem Mining. **Cannot be combined with other offers.** Limit one coupon per customer.

# Primitive Outback Kayaking and Gem Mining

Gem Mining - Kayaking - Baby Bunnies - Fainting Goats  
Fun for the Whole Family!

155 Robin Lynn Lane, Otto, NC 28763

828.349.1717 • [explore@primitiveoutback.com](mailto:explore@primitiveoutback.com)

### DINING

#### Las Margaritas

Authentic Mexican Restaurant. Indoor and outdoor seating. Adult beverages. Kids menu. Pets welcome at outdoor seating. Open 7 days a week, 11am - 9pm.  
24 Iotla St.  
Franklin, NC 28734  
828-369-2021  
[facebook.com/people/las-margaritas-mexican-restaurant](https://facebook.com/people/las-margaritas-mexican-restaurant)

#### Lazy Hiker Brewing Company

Come get lazy, enjoy craft beer in our taproom, family-friendly, cans/growlers, to-go, food truck on-site.  
188 W Main St.  
Franklin, NC 28734  
828-349-BEER (2337)  
[lazyhikerbrewing.com](http://lazyhikerbrewing.com)



#### Siam Thai Cuisine

Come enjoy our authentic, Bangkok style Thai cuisine, and our friendly staff.  
8507 Georgia Rd.  
Otto, NC 28763  
828-369-9324



#### Sakura Japanese Restaurant

Japanese, Sushi, Asian, vegetarian, vegan, seafood, sashimi, fresh, hibachi, allergy-friendly, draft beer, wine, sake, teriyaki, kid-friendly.  
57 Highlands Rd.  
Franklin, NC 28734  
828-349-8917  
[sakurafranklinnc.com](http://sakurafranklinnc.com)

#### Sunset Restaurant

Great homestyle cooking with family atmosphere, homemade pies, daily specials and sides. Dine in, curbside, carryout, catering.  
498 Harrison Ave.  
Franklin, NC 28734  
828-524-4842  
[facebook.com/sunsetrestaurantnc](https://facebook.com/sunsetrestaurantnc)

### FAMILY ATTRACTIONS

#### Little Tennessee River Greenway Frog Quarters

Support organization for Little Tennessee River Greenway - Frog Quarters has information, coffee, gifts and internet service.  
573 E Main St.  
Franklin, NC 28734  
828-369-8488  
[littletennessee.org](http://littletennessee.org)

#### Andy's Trout Farm

Fishing, gem mining, hiking, cabins, family fun, waterfalls, weddings, RVs, wildflowers. Church groups, family reunions.  
116 Andy's Trout Farm Rd.  
Otto, NC 28763  
706-746-2550  
[andystroutfarm.com](http://andystroutfarm.com)

## GEM MINES & SHOPS

### Artisan's Mineral & Gemstone Gallery

30 years experience in stone cutting & jewelry making from rough to refined gems/minerals.

3348 Georgia Rd.  
Franklin, NC 28734  
828-524-9193  
[artisanjewelrync.com](http://artisanjewelrync.com)



### Gold City Gem Mine

Gem mining. Gold panning. Gem cutting. Jewelry shop. Snacks and refreshments. Gifts. Souvenirs. Antiques.  
9410 Sylva Rd, Hwy 441  
Franklin, NC 28734  
800-713-7767  
Find Us On Facebook:  
[goldcitygemmine](http://goldcitygemmine)  
[goldcityamusement.com](http://goldcityamusement.com)  
[goldcity1993@gmail.com](mailto:goldcity1993@gmail.com)



### Mason's Ruby and Sapphire Mine

The original dig-your-own gemstone mine. Now offering enriched buckets.  
6961 Upper Burningtown Rd.  
Franklin, NC 28734  
828-369-9742  
[masonsmine.com](http://masonsmine.com)



NC's largest and finest gem and mineral store. Gemstone cutting and mounting. Free museum.  
130 E Main St.  
Franklin, NC 28734  
800-821-7829  
[rubycity.com](http://rubycity.com)

### Rose Creek Mine

Good clean dirty fun!  
All equipment provided. Family friendly, picnic area, closed Sundays.  
115 Terrace Ridge Dr.  
Franklin, NC 28734  
828-349-3774  
[rosecreekmine.com](http://rosecreekmine.com)

### Primitive Outback Kayaking & Gem Mining

Come enjoy Gem Mining for Treasure in our covered outdoor flume, kayaking trips on the river, and visit our baby fainting goats. Fun for everyone!  
155 Robin Lynn Ln.  
Otto, NC 28763  
828-349-1717  
[primitiveoutback.com](http://primitiveoutback.com)

### Sheffield Gem Mine

A True Authentic Ruby Mine! You'll be mining NATIVE dirt with the potential to find NATIVE RUBIES/SAPPHIRES. Already dug buckets, come see us and pick out your LUCKY bucket!!!  
385 Sheffield Farms Rd.  
Franklin, NC 28734  
828-369-8383  
[www.sheffieldgemmine.com](http://www.sheffieldgemmine.com)

## GENERAL SERVICES

### Franklin Office Supply

Document services, graphics and signage.  
161 Highlands Rd.  
Franklin, NC 28734  
828-349-7468  
[franklinofficesupply.com](http://franklinofficesupply.com)

### Jeff Johnson Timber Frames

Small design build timber frame company with 71-years combined experience with an eye for detail.  
562 Terrell Rd.  
Franklin, NC 28734  
828-524-7585  
[jeffjohnsontimberframes.com](http://jeffjohnsontimberframes.com)

## GENERAL SERVICE

### **Mountain Power Washing**

Experienced pressure washing company provides top quality exterior cleaning for your personal needs.

85 Horse Apple Tree Ln.

Otto, NC 28763

828-371-9261

[mountainpowerwashing@gmail.com](mailto:mountainpowerwashing@gmail.com)

### **Rose Room Spa**

Come in and escape the ordinary. Permanent makeup, eyelash extensions, eyelash lifts, eyelash tinting, facials, waxing, spray tanning, and our infrared sauna.

21 Heritage Hollow Dr.

Franklin, NC 28734

828-349-0702

[oseroomspallc.com](http://oseroomspallc.com)

### **St. John's Cartoogechaye Episcopal Church**

A vibrant church family balancing worship, study, fellowship and service.

542 St. John's Church Rd.

Franklin, NC 28734

828-524-6370

[stjohnscartoogechaye.com](http://stjohnscartoogechaye.com)

### **Tiny Life Homes**

Tour our tiny homes and cabins to see how you can live large, while living tiny.

4075 Georgia Rd.

Franklin, NC 28734

828-634-0077

[sales@tinylife.com](mailto:sales@tinylife.com)

[tinylife.com](http://tinylife.com)

## LODGING

### **Andy's Trout Farm**

Fishing, gem mining, hiking, cabins, family fun, waterfalls, weddings, RVs, wildflowers. Church groups, family reunions.

116 Andy's Trout Farm Rd.

Otto, NC 28763

706-746-2550

[andystroutfarm.com](http://andystroutfarm.com)

### **A Sapphire Inn**

Downtown Franklin, walk to Restaurants, Shops, and Breweries. We are Pet-Friendly. Also have special rates for: hikers, bikers, miners, military veterans, seniors, workers and groups.

761 E Main St.

Franklin, NC 28734

828-524-4406

[sapphireinnfranklin.com](http://sapphireinnfranklin.com)

### **Big Bear Cabin Rentals**

Log cabins in wooded setting with Wi-Fi and W/D. Perfect base location and open year-round.

3590 Georgia Rd.

Franklin, NC 28734

828-349-0099 • 866-349-0099

[bigbearfranklin.com](http://bigbearfranklin.com)

### **Buckwood Log Lodge**

Log homes villas. Secluded water and mountain views.

Year-round, fireplace, porches, AC, TV, laundry. Pets welcome.

75 Doe Falls Rd.

Highlands, NC 28741

828-524-4811 • 866-524-4811

[buckwood.com](http://buckwood.com)

### **Colonial Inn Franklin**

30 rooms, mountain views, microwave, refrigerator, TV, coffee in lobby and Wi-Fi. Limited Pet rooms with terms and conditions.

3157 Georgia Rd.

Franklin, NC 28734

828-524-6600

[colonialinnfranklin.com](http://colonialinnfranklin.com)

### **Franklin Terrace B&B**

Historic antebellum style home, walk to town, country breakfast, rock on the porch, a/c, WiFi.

159 Harrison Ave.

Franklin, NC 28734

828-369-8888

[franklin-terrace.com](http://franklin-terrace.com)

## LODGING

### River Run Cabins

Breathtaking views, log-cabins, hot tubs, fireplaces on Little Tennessee River, pet-friendly, reasonable, year-round.

7900 Bryson City Rd.

Franklin, NC 28734

828-342-7406

[facebook.com/River-Run-Cabins](https://www.facebook.com/River-Run-Cabins)

*Vacation-Homes*

### Sleepy Hollow Mountain Cabins

Three charming one and two bedroom cabins on 7 beautiful acres with creek in the heart of GEM mine country.

130 Sleepy Hollow Ln.

Franklin, NC 28734

828-347-0882

[sleepyhollowmountaincabins.com](http://sleepyhollowmountaincabins.com)

## CAMPGROUND

### Andy's Trout Farm

Fishing, gem mining, hiking, cabins, family fun, waterfalls, weddings, RVs, wildflowers.

Church groups, family reunions.

116 Andy's Trout Farm Rd.

Otto, NC 28763

706-746-2550

[andystroutfarm.com](http://andystroutfarm.com)

### Cullasaja River RV Park

Our campground is located on the Cullasaja River, five miles from Franklin.

6269 Highlands Rd.

Franklin, NC 28734

828-524-2559 • 800-843-2795

[campnc.com](http://campnc.com)

### Downtown RV Park

Beautiful wooded park in downtown Franklin.

Park & walk to everything.

11 Sites, 30 Amp.

Full Hook ups.

160 Heritage Hollow Dr.

Franklin, NC 28734

941-720-0067

[downtownrv.com](http://downtownrv.com)

### Franklin RV Park and Campground

Full hook-up sites, 20/30/50 AMP, free Wi-Fi, cable. Big rigs welcome. Pull-through sites, pavilion, fireplace.

230 Old Addington Bridge Rd.

Franklin, NC 28734

828-349-6200

[franklinrvpark.com](http://franklinrvpark.com)

### High Country Haven Camping & Cabins

Spacious wooded campground with full hookups plus wifi, 8 RV sites, 3 cabins, mountain views, close to town and hiking.

175 Highhaven Ln.

Franklin, NC 28734

828-369-2267

*On Facebook*

### Mi Mountain Campground

Full hookups, tent sites, rustic cabins, firepits, playground, pets allowed.

151 Mi Mountain Rd.

Franklin, NC 28734

828-524-6155

[mimountaincampground.com](http://mimountaincampground.com)

### Old Corundum Millsite Campground

Located on Cullasaja River off Hwy 64E, 5 miles from Franklin. 85 sites, full hook-ups.

80-33 Nickajack Rd.

Franklin, NC 28734

828-524-4663

[ocmcampground.com](http://ocmcampground.com)

### Pines RV Park and Cabins

30/50 AMP. Open year-round.

Tenters to 45-Foot RVs.

Cabins. Beautiful, quiet mountain setting.

4724 Murphy Rd.

Franklin, NC 28734

828-524-4490

[gocampin.net/pinesrvpark](http://gocampin.net/pinesrvpark)

### Rose Creek Campground & Cabins

Secluded, flat and shaded campsites located in serene valley surrounded by beautiful mountains and landscape.

140 Terrace Ridge Dr.

Franklin, NC 28734

252-286-2008

[rosecreekcamping.com](http://rosecreekcamping.com)





## LODGING

### CAMPGROUND

#### Whistle Stop Depot

Beautiful mountain views,  
Wi-Fi, power, water, sewer.  
Call or email.  
145 River Rd.  
Franklin, NC 28734  
828-349-1600  
[whistlestopmall.com](http://whistlestopmall.com)

## OUTDOOR ACTIVITY

### KAYAKING

#### Primitive Outback Kayaking & Gem Mining

Kayak down the Little  
Tennessee River, Gem Mine,  
and visit our baby fainting  
goats. Enjoy nature at its best!  
Great Family Fun!  
155 Robin Lynn Ln.  
Otto, NC 28763  
828-349-1717  
[primitiveoutback.com](http://primitiveoutback.com)

#### Friends of the Greenway

The Greenway offers a  
walk along the Little  
Tennessee River for  
nearly five miles. Find out more:  
[littletennessee.org](http://littletennessee.org) or visit  
FROG Quarters  
573 E Main St.  
Franklin, NC 28734



#### Pickin' on the Square Saturday Nights

Late May - Mid October. FREE!  
Bring your family, bring your  
friends, bring a chair.  
[townoffranklinnc.com/pickin-on-the-square.html](http://townoffranklinnc.com/pickin-on-the-square.html)

#### Wayah Bald (Nantahala National Forest)

Open April 16-  
December 31.  
70-year-old stone fire tower,  
where AT & Bartram Trails  
cross, picnic, restrooms, hiking  
trail, scenic views.



#### Nantahala Gorge (Nantahala National Forest)

Open year-round.  
Picnic, canoe/  
rafting, fishing, scenic views.



#### Standing Indian (Nantahala National Forest)

Open April-  
November.  
Camping, picnic, restrooms,  
trailer space, showers, drinking  
water, hiking trail, fishing, fee  
required.



#### Big Laurel Falls and Mooney Falls

An easy 0.5-mile  
trail brings you  
to this 30-foot cascading  
waterfall.



#### Hurricane Primitive (Nantahala National Forest)

Open April 16-  
December 31.  
Camping, trailer space, hiking  
trails, horse trail, fishing.



## QUILTING

#### A Stitch In Time

Premier quilt and fabric  
store, baby lock dealer  
featuring the latest in  
fabrics, notions, and classes.  
23 Macon Center Dr.  
Franklin, NC 28734  
828-524-3300 • 919-939-1005  
[astitchintimenc@gmail.com](mailto:astitchintimenc@gmail.com)

REAL ESTATE

**Sheila Myers-Keller Williams Realty**



Give Sheila a call to help you find the perfect mountain, vacation or seasonal home and land. Over 20+ years experience.

1573 Highlands Rd.  
Franklin, NC 28734  
828-342-0866  
[BuyFranklinNCHomes.com](http://BuyFranklinNCHomes.com)

**RE/MAX Elite Realty**

Let us help you find your dream home in the mountains! Outstanding Agents, Outstanding Results!

1296 E Main St.  
Franklin, NC 28734  
828-349-4600 • 866-981-4600  
[propertyinfranklin.com](http://propertyinfranklin.com)

**Sunset Ridge Motorcoach Resort**

Luxury motor home lots, paved, landscaped, mountain view, clubhouse, in-ground pool, fitness center, wireless internet.  
6265 Sylva Rd.  
Franklin, NC 28734  
424-335-5790  
[sunsetridgemotorcoach.com](http://sunsetridgemotorcoach.com)

SHOPPING

**Appalachian Growers**

USDA organic hemp farm providing quality products: Full spectrum oil, lotion and salve.  
250 Depot St. #2204  
Franklin, NC 28734  
404-273-6544  
[appalachiangrowers.com](http://appalachiangrowers.com)

**Franklin Office Supply**

Duke Cannon, Lollia, La Chatelaine, Anna Griffin, Stationery, Envelopes, Candles & Books.  
161 Highlands Rd.  
Franklin, NC 28734  
828-349-7468  
[franklinofficesupply.com](http://franklinofficesupply.com)

**Friends of the Macon County Public Library**

Non-profit, used, CDs, children's, puzzles, magazines, spiritual, fiction, non-fiction, rare, homeschooler textbooks, DVDs, large print, regional  
115 Highlands Rd.  
Franklin, NC 28734  
828-349-6256  
[maconlibraryfriends.org](http://maconlibraryfriends.org)



NC's largest and finest gem and mineral store. Gemstone cutting and mounting. Free museum.  
130 E Main St.  
Franklin, NC 28734  
800-821-7829  
[rubycity.com](http://rubycity.com)

**USDA Certified Organic Hemp Products  
Straight from Our Farm in Franklin, NC**

[www.appalachiangrowers.com](http://www.appalachiangrowers.com)  
828-326-2257 • [info@appalachiangrowers.com](mailto:info@appalachiangrowers.com)







## THEATER

### Smoky Mountain Center for the Performing Arts

1500-seat state-of-the-art facility, presents the finest live entertainment to our area.

1028 Georgia Rd.

Franklin, NC 28734

828-524-1598 • 866-273-4615

[greatmountainmusic.com](http://greatmountainmusic.com)

### Franklin/Nantahala Tourism Development Committee

Promoting tourism in Franklin and Nantahala.

Franklin, NC 28734

828-524-3161

[exploringnc.com](http://exploringnc.com)

## VISITOR INFORMATION

### Franklin Chamber of Commerce

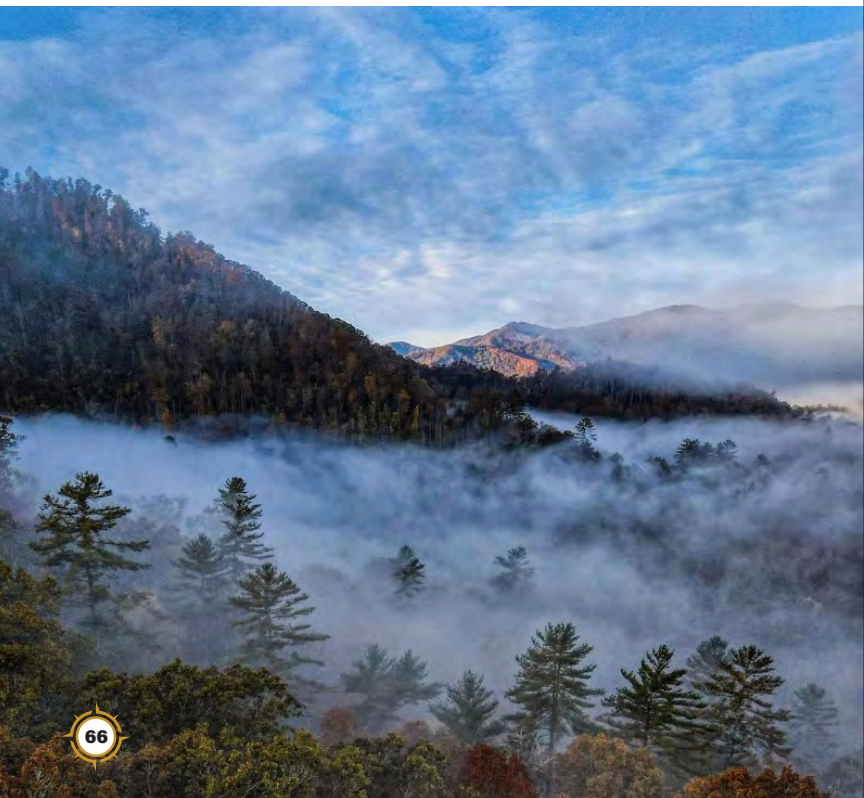
Waterfalls, arts, family, hiking, gems, getaway, information, mines, trails, visitors, adventure, shopping, antiques, outdoors, historic.

98 Hyatt Rd.

Franklin, NC 28734

828-524-3161

[visitfranklinnc.com](http://visitfranklinnc.com)



# *Franklin & Nantahala*

NORTH CAROLINA

*Your Gateway to Adventure*



**HIKING ♦ WATERFALLS ♦ FLY FISHING**  
**SHOPPING ♦ CRAFT BREWERIES ♦ GEM MINING**



**EXPLORINGWNC.COM**  
**800-336-7829**





Wayah Bald Fire Tower  
Franklin, NC

VISITOR INFORMATION



**Smoky Mountain Host  
Visitor Center**

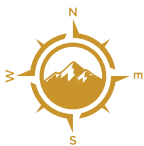
Discover activities, events, history,  
and natural beauty the region  
has to offer. Gift shop, coffee  
and snacks. Free Wi-Fi; opens  
9:00am to 5:00pm daily; closed  
Thanksgiving and Christmas Day.

4437 Georgia Rd.  
Franklin, NC 28734  
828-369-9606  
[visitsmokies.org](http://visitsmokies.org)



Mountain View  
Franklin, NC

# HAYESVILLE & BRASSTOWN



15 miles ← from Murphy

133 miles → to Atlanta

- **35 miles from Franklin, NC**
- **Referred to as: "The Secret JEWEL of Western NC"**
- **2 Vibrant Communities:**
  - ★ **Hayesville** - Packed with boating, hiking, mountain biking and fishing spots. Lake Chatuge is waterhaven. See a Pumpkin fly: Pumpkin Chunkin Festival - Oct. 20-22, 2023. [claychambernc.com](http://claychambernc.com)
  - ★ **Brasstown** - Scenic Area. John C. Campbell Folk School Transforms Lives - offers a variety of classes, 800-365-5724 [folkschool.org](http://folkschool.org)
- **Hidden Gems / Popular Attractions:**
  - ★ **The Copper Door** - Named one of the best restaurants in the country. [thecopperdoor.com](http://thecopperdoor.com)
  - ★ **Goldhagen Studio Gallery** - International glass-blowing artist, has created pieces for: Coca-Cola, Walt-Disney, Philips Arena. 828-389-8847. [goldhagenartglass.com](http://goldhagenartglass.com)
  - ★ **Chatuge Dam & Recreation Area** - Hike and see the Dam. Picnic area, playground, easy walk or run. Facilities available. 1407 Chatuge Dam Rd., Hayesville.

[claychambernc.com](http://claychambernc.com)

## ARTS/CRAFTS

### John C. Campbell Folk School

Since 1925. Offering courses in craft, music and dance. On-campus housing. Visitors welcome.

1 Folk School Rd.  
Brasstown, NC 28902  
828-837-2775 • 800-365-5724  
[folkschool.org](http://folkschool.org)



[folkschool.org](http://folkschool.org)  
828-837-2775

## CULTURAL/MUSEUM

### Clay County Historical & Arts Museum

Dedicated to preserving local history & culture at the Historical Jail. We are open Memorial Day Weekend through Labor Day Weekend. We will be open Tuesday-Saturday from 10am - 4pm. During September & October, we will be open on Fridays & Saturdays only.

21 Davis Loop  
Hayesville, NC 28904  
828.389.6814  
[clayhistoryarts.org](http://clayhistoryarts.org)



[olivesporch.org](http://olivesporch.org)  
828-837-1885

### Historic Hayesville

Historic Hayesville Centennial Exhibit featuring downtown businesses, history & events.

116 Sanderson St.  
Hayesville, NC 28904  
828-389-1862  
[historichayesvilleinc.com](http://historichayesvilleinc.com)

## TWO GREAT WAYS TO EXPERIENCE APPALACHIA

## DINING

### Carlotta's French Market

New Orleans-style snoballs, po-boys and treats; fun for the whole family. Open Tuesday-Saturday  
146 Hwy 64 W  
Hayesville, NC 28904  
828-415-0909  
[facebook.com/carlottashayesville](https://facebook.com/carlottashayesville)



### The Copper Door

Fine dining featuring aged steaks, fresh seafood, full bar, award-winning wine list; Reservations Recommended.

2 Sullivan St.  
Hayesville, NC 28904  
828-389-8460  
[thecopperdoor.com](http://thecopperdoor.com)



## EVENT/WEDDING

### Clay County Courthouse/ Beal Center

Restored 1888 courthouse in the square, perfect venue for weddings, family gatherings, celebrations of life.

Main St.  
Hayesville, NC 28904  
828-415-1623  
[bealcenter.org](http://bealcenter.org)





## LODGING

### Deerfield Inn

All rooms overlook beautiful Lake Chatuge. Amenities include mini-fridge, microwave, Wi-Fi, cable. Non-smoking. Pets welcome.  
40 Chatuge Ln.  
Hayesville, NC 28904  
828-389-8272  
[deerfield-inn.com](http://deerfield-inn.com)

### Hinton Center

Retreat. Reflect. Renew. Hinton Center accommodations venue helps fund healthy, effective communities of faith. Pets welcome.  
2330 Hinton Center Rd.  
Hayesville, NC 28904  
828-389-8336 • 866-389-8336  
[hintoncenter.org](http://hintoncenter.org)

## OUTDOOR ACTIVITY

### HORSEBACK RIDING

#### Chunky Gal Stables

Guided trail rides. Year-round fun. Excitement for all experience levels. National forest trails.  
1306 Hot House Rd.  
Hayesville, NC 28904  
828-389-4175  
[chunkygalstables.com](http://chunkygalstables.com)

## OUTDOOR ACTIVITY

### Waterfall Byway

Winding 98 miles and featuring more than 200 distinct waterfalls, it begins at U.S. 64's intersection with NC 215. 98 miles • 3.5 hours  
Travels through Clay, Jackson, Macon and Transylvania counties.  
[ncdot.gov/travel/scenic](http://ncdot.gov/travel/scenic)



### Jackrabbit Mountain Trail

15 miles, easy, fishing, hiking, biking  
Trailhead: Jackrabbit Recreation Area. Trail offers an excellent view of Lake Chatuge and provides lake fishing access as well. At Lake Chatuge get on NC 175, turn onto Jackrabbit Road, signed parking area on left.

### (Nantahala National Forest)

Open year-round  
Picnic, restrooms, drinking water, hiking trail.

### Lake Chatuge

Lake Chatuge's abundance of scenic coves along its 133 mile shoreline are great for fishing, swimming, boating, camping and other water sports.



## OUTDOOR ACTIVITY

### Fires Creek Area Trails

0.3–5.4 miles, easy/moderate/difficult, fishing, hiking, biking, horse trails  
Trailhead: Fires Creek Recreation Area. Offers a number of excellent trails, including a designated horseback trail and horse camp. Cover Loop is an easy 0.3-mile trail that is handicap-accessible. Other popular foot trails include Leatherwood Loop Trail (0.7 mile), Leatherwood Branch Access (3.5 miles) and Cover Trail, which follows Fires Creek for approximately five miles.



**Leatherwood Falls**  
25' falls visible from picnic area.



### Quannassee Path

Two-mile Cherokee History Trail, downtown, depicting culture of Cherokee people at five historical sites.

## THEATER



### Peacock Performing Arts Center

Events, children's plays, dance, concerts, shows, entertainment.  
301 Church St.  
Hayesville, NC 28904  
828-389-2787  
[thepeacocknc.org](http://thepeacocknc.org)



**Good For The Soul!**



**claychambernc.com**

BRASSTOWN • HAYESVILLE • SHOOTING CREEK  
TUSQUITTEE • WARNE • SWEETWATER • ELF

**CLAY COUNTY TRAVEL & TOURISM**

828-389-3704

[facebook.com/claychambernc](https://facebook.com/claychambernc)



## VISITOR INFORMATION

### **Clay County Chamber of Commerce**

Chamber of  
Commerce  
and visitors center  
for information.  
96 Sanderson St.  
Hayesville, NC 28904  
828-389-3704  
[claychambernc.com](http://claychambernc.com)



**Clay County Travel & Tourism**  
Find your adventure on Lake  
Chatuge, explore Fires Creek,  
Jack Rabbit Trails, vineyards,  
festivals, relax!  
828-389-3704  
[claychambernc.com](http://claychambernc.com)

### **Clay County Communities Revitalization Association**

Visit historic courthouse,  
music sculpture, Cherokee  
homestead. Hike/Bike 15-mile  
Jackrabbit Trails & Quanassee  
Path.  
PO Box 1533  
Hayesville, NC 28904  
828-389-6531  
[cccra-nc.org](http://cccra-nc.org)



# HIGHLANDS, CASHIERS, GLENVILLE, SAPPHIRE & SCALY MOUNTAIN



37 miles

← from Sylva

19 miles

→ to Franklin

▪ **Only 2.5 hours from Atlanta, Georgia**

▪ **5 Vibrant Communities:**

- ★ **Cashiers** - Offers gorgeous scenery and waterfalls.
- ★ **Glennville** - Popular lakeside vacation community, Lake Glennville.
- ★ **Highlands** - Quaint town is hidden jewel surrounded by Nantahala National Forest & situated at elevation 4,118 feet. Experience mother natures' four seasons!
- ★ **Sapphire** - Known for resorts, hiking, forests, stunning waterfalls. 8 miles from Cashiers. Worth exploring!
- ★ **Scaly Mountain** - Winter and Summer Tubing, Ice skating, Gem Mining, Trout Fishing. Hiking Trails. 6 miles W. Highlands. [scalymountain.com](http://scalymountain.com)

▪ **Hidden Gems / Popular Attractions:**

- ★ In the heart of Great Smoky Mountains, these communities offer quaint town centers, fine dining, antique shops, golf courses, boutiques, art galleries and breweries. Worth your time!
- ★ **The Shadow of the Bear** - Witness this natural phenomenon from February-March, and in November.
- ★ **Lake Glennville** - Public beach access, swimming, boating.

[highlandschamber.org](http://highlandschamber.org)  
[cashiersareachamber.com](http://cashiersareachamber.com)



## BLUEWAYS

### Lake Glenville

Lake Glenville is a reservoir located 8 miles from Cashiers, North Carolina. It's a tourist destination for kayakers, canoers, water skiers and pleasure-boat enthusiasts who found a cool retreat in the Southeast's otherwise boiling summers.



## DINING

### Annie's Café

Inside Bartram Market, serving delicious homemade meals, Highlands Outpost. 7420 Dillard St. Scaly Mountain, NC 28775 828-526-1663 [highlandspost.com/activities/annies-cafe](http://highlandspost.com/activities/annies-cafe)



## CULTURAL/MUSEUM

### Highlands Museum & Historical Village

A village composed of several restored buildings, with historical exhibits in the museum. 524 N 4th St. Highlands, NC 28741 828-787-1050 [highlandshistory.com](http://highlandshistory.com)

### Zachary Tolbert House Museum

Exhibiting the largest known collection of handcrafted "plain-style" furniture, on-site walking trails, historic schoolhouse, pavilion with restrooms, picnic tables, Civil War Trail. 1940 NC 107 S Cashiers, NC 28717 828-743-7710 [cashiershistoricalsociety.org](http://cashiershistoricalsociety.org)

## GEM MINES & SHOPS

### Jackson Hole Trading Post

Cleanest mine around. Help for inexperienced. On Waterfall drive between Franklin and Highlands. Handicap-accessible. Pets welcome. Open May 1 - Dec. 1. 9770 Highlands Rd. Hwy 64 E Highlands, NC 28741 828-524-5850 [jacksonholegemmine.com](http://jacksonholegemmine.com)

## LODGING

### Hotel Cashiers

A pet friendly boutique inn and wine bar located in the center of Cashiers.

7 Slab Town Rd.  
Cashiers, NC 28717  
828-743-7706  
[hotelcashiers.com](http://hotelcashiers.com)

### Fire Mountain Inn, Cabins and Treehouses

A secluded mountaintop hideaway on hundreds of acres with breathtaking long-range mountain views. Pets welcome.

700 Happy Hill Rd.  
Highlands, NC 28775  
828-526-4446 • 800-775-4446  
[firemt.com](http://firemt.com)

### Buckwood Log Lodge

Log homes and villas. Secluded water and mountain views. Year-round, fireplace, porches, AC, TV, laundry. Pets welcome.

120 Little Falls Rd.  
Highlands, NC 28741  
828-524-4811 • 866-524-4811  
[buckwood.com](http://buckwood.com)

## OUTDOOR ACTIVITY

### Highlands Outpost

Snow tubing, ice skating, summer tubing, gem mine, trout fishing, gift shop, café, family-friendly.

7420 Dillard Rd.  
Scaly Mountain, NC 28775  
828-526-3737  
[highlandsoutpost.com](http://highlandsoutpost.com)



**ELEVATE YOUR family fun!**

**HIGHLANDS OUTPOST**

MOUNTAIN COASTER  
EXTREME TUBING SLIDE  
TROUT FISHING  
GEM MINING

[HighlandsOutpost.com](http://HighlandsOutpost.com)

7420 Dillard Road | Scaly Mountain, NC 28775  
828-526-3737

### PLATEAU PLAYGROUND

PLAY AT A HIGHER LEVEL

The Atlanta side of Highlands offers a plethora of fun! Featuring the only **public golf course** on the Plateau, adventures at **Highlands Aerial Park**, the highest rated zipline adventure park, with family challenge courses, giant swing, guided UTV tours, free nature trails, and **Highlands Outpost**, with year round mountain coaster, tubing, gem mining, and café. **Waterfalls** (Estatoah, Mud Creek, Middle Creek), **Hiking Trails** (Bartram, Sky Valley, High Holly), and **Scenic Overlooks** offer a great mountain experience for all ages.

**ZIPLINING**

**Highlands AERIAL PARK**

Thrilling Adventures for All Ages  
*Unequaled views. Unbeatable fun.*

OPEN EVERY DAY  
9425 Dillard Road  
Scaly Mountain, NC 28775  
[HighlandsAerialPark.com](http://HighlandsAerialPark.com)  
828-743-8248

## OUTDOOR ACTIVITY

### Highlands Aerial Park

Ziplines! Located at an elevation of 3,620 feet, high atop High Holly Mountain. 9625 Dillard Rd. Scaly Mountain, NC 28775 828-526-8773 • 855-947-6344 [highlandsaerialpark.com](http://highlandsaerialpark.com)



### Waterfall Byway

Strangely powerful or eerily tranquil, waterfalls do have a way of casting a spell. If you happen to be a fan, this is your byway. Winding 98 miles and featuring more than 200 distinct waterfalls, it begins at U.S. 64's intersection with NC 215. 98 miles • 3.5 hours Travel through Clay, Jackson, Macon and Transylvania counties.



### Whiteside Mountain (Nantahala National Forest)

Open year-round Hiking trails, scenic views.



### Bridal Veil Falls

Visible from U.S. 64, this beautiful waterfall drops 120 feet.



### Cullasaja Falls

Visible from U.S. 64, this 250-foot waterfall is accessible by a 0.5-mile steep trail.

### Dry Falls

3.5 miles west of Highlands, a paved walkway takes you to and through the 75-foot falls.

### Whitewater Falls

Open year-round Restrooms, hiking trails, scenic views. At 411 feet, this is the highest waterfall in the eastern U.S. From U.S. 64 to Sapphire, turn onto NC 281. Entrance is in about 8 miles

### Panthertown Valley

Nearly 30 miles of trails branches off from the area's old main roads, 21 of which are open to bikes.

### Whiteside Mountain Trail

2 miles, easy Trailhead: Whiteside Mountain parking area. The loop trail features a view of the highest vertical drop in the eastern U.S. at 750 feet.



## THEATER

### Highlands Playhouse

Highlands, NC 28741 828.526.2695 [highlandsplayhouse.org](http://highlandsplayhouse.org)

## VISITOR INFORMATION

### Cashiers Area Chamber of Commerce

Visit for area information, maps, event calendars, dining, shopping, recreation guides and more.

202 Hwy U.S. 64 W Cashiers, NC 28717 828-743-5191 [cashiersareachamber.com](http://cashiersareachamber.com)

### Highlands Chamber of Commerce & Visitor Center

Conveniently located on Hwy 64 to help visitors plan their stay! (Free parking behind building) 108 Main St.

Highlands, NC 28741 828-526-2112 [highlandschamber.org](http://highlandschamber.org)



# MURPHY & ANDREWS

Hiwasee Lake  
Murphy, NC



55 miles



Fontana

15 miles



Hayesville

▪ **45 miles from Franklin, NC**

▪ **Find Your Adventure or take in the Breathtaking Mountain Views!**

▪ **2 Vibrant Communities:**

- ★ **Murphy** - Situated at the confluence of the Hiwassee & Valley rivers. Filled with mountains, lakes, rivers and streams providing breathtaking views.
- ★ **Andrews** - Marvel at the beautiful Andrews Valley Unlimited outdoor activities. Some structures are listed on the National Historical Register!

▪ **Hidden Gems / Popular Attractions:**

- ★ **Fields of the Wood** - Celebrate Christian Heritage and see the Ten Commandments built on a mountain. Picnic area. Free admission. [cogop.org](http://cogop.org)
- ★ **Hanging Dog Recreation Area** - Five minutes from Murphy, great destination for scenic drive or a day outing. Offers year-round access to Hiwassee Lake. Boating, Fishing & Picnicing. [fs.usda.gov](http://fs.usda.gov)
- ★ **Heritage Park Disc Golf Course** - The park offers Disc golf, Public 18-hole course, jogging, walking and kids flying their kites. 155 Wilson St., Andrews, NC [udisc.com/courses/heritage.park](http://udisc.com/courses/heritage.park)

[visitcherokeecountync.com](http://visitcherokeecountync.com)

[AndrewsChamber.com](http://AndrewsChamber.com)

[CherokeeCountyChamber.com](http://CherokeeCountyChamber.com)



## Downtown Murphy, NC

### AGRITOURISM

#### **Visit NC Farms**

Find area agritourism, including fresh local food, activities, farmer's markets, trails, and local shopping. Contact Cherokee County Chamber of Commerce at 828-837-2242 or [info@cherokeecountychamber.com](mailto:info@cherokeecountychamber.com) for more information.

#### **The Murphy Farmer's Market**

100% locally sourced crafts & produce. Find over 40 vendors featuring fresh veggies, fruits, livestock, plants, jams, jellies, goats milk, cheese, meats, chicken, baked goods, and honey. Downtown Murphy at the L & N Depot. 9:00 am -1:00 pm. April - Oct. 4 Railroad St. Murphy, NC 28906 828-644-8677

### ARTS/CRAFTS

#### **John C. Campbell Folk School**

Since 1925. Offering courses in craft, music and dance. On-campus housing. Visitors welcome. 1 Folk School Rd. Brasstown, NC 28902 828-837-2775 • 800-365-5724 [folkschool.org](http://folkschool.org)

#### **Olive's Porch**

A Folk School experience in downtown Murphy featuring classroom space, a retail shop showcasing the work of Appalachian artists, and a studio space dedicated to the Artists in Residence program. 27 Peachtree St. Murphy, NC 28906 828-837-1885 [olivesporch.org](http://olivesporch.org)

## BREWERY/WINERY

### FernCrest Winery

Handcrafted wines, wine tastings, wine by bottle or glass, local cheeses, jams, art, wine merchandise, custom baskets.

1060 Main St.

Andrews, NC 28901

828-321-1600

[ferncrestwinery.com](http://ferncrestwinery.com)

### Hoppy Trout

#### Brewing Company

Microbrewery, handmade Sicilian brick-oven pizza, appetizers, salads.

911 Main St.

Andrews, NC 28901

828-835-2111

[hoppytroutbrewing.com](http://hoppytroutbrewing.com)

## CASINO

### Harrah's Cherokee Valley River Casino and Hotel



60,000 square feet of state-of-the-art gaming space, slots, traditional table games, food market, restaurant.

777 Casino Pkwy

Murphy, NC 28906

828-422-7777

[caesars.com/harrahs-cherokee-valley-river](http://caesars.com/harrahs-cherokee-valley-river)

## CULTURAL/MUSEUM

### Andrews Art Museum

Exhibits featuring local and regional artists. Corner of Chestnut and Third streets.

125 Chestnut St.

Andrews, NC 28901

828-361-2781

[www.vcahs.com](http://www.vcahs.com)

### Cherokee County Historical Museum

Artifacts and exhibits showcasing local history, Trail of Tears Interpretations Center.

87 Peachtree St.

Murphy, NC 28906

828.837.6792

[cherokeecounty-nc.gov/183/historicalmuseum](http://cherokeecounty-nc.gov/183/historicalmuseum)

## DINING

### Harrah's Cherokee Valley River Casino and Hotel



Food market.

777 Casino Pkwy

Murphy, NC 28906

Nathan's Famous

Panda Express

Earl of Sandwich

Starbucks

Moe's Southwest Grill

### The Landing Café, Ultra Star Multi-Tainment Center

Hearty southern breakfast, burgers to crab cakes for lunch & dinner, bowling food, beverages, bar.

777 Casino Pkwy

Murphy, NC 28906

828-422-5309

[valleyriver.ultrastarnc.com/food](http://valleyriver.ultrastarnc.com/food)

### Hoppy Trout

#### Brewing Company

Microbrewery, handmade Sicilian brick-oven pizza, appetizers, salads.

911 Main St.

Andrews, NC 28901

828-835-2111

[hoppytroutbrewing.com](http://hoppytroutbrewing.com)

## EVENT/WEDDING

### Hawkesdene

Luxury private mountain estate on 70 acres for groups. Destination weddings, family reunions, retreats, 41 bedrooms.

381 Phillips Creek Rd.

Andrews, NC 28901

828-321-6027 • 800-447-9549

[hawkesdene.com](http://hawkesdene.com)

### McGuires Millrace Farm

Wedding & Elopement Venue.

Special Events, Celebrations,

Galas. Seating for up to 200.

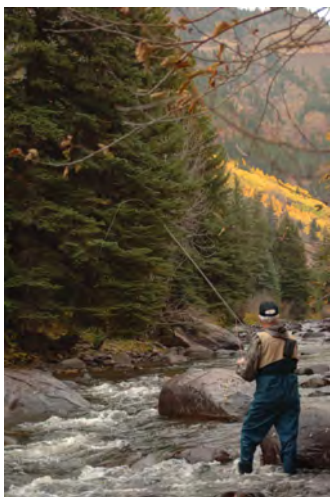
Lodging: 6 rooms/30 people.

600 Hendrix Rd.

Murphy, NC 28906

828-837-0015

[mcguiresmillracefarm.com](http://mcguiresmillracefarm.com)



## OUTDOOR ACTIVITY

### The Benton MacKaye Trail

Approximately 300 miles in length and starts 0.2 miles down the Appalachian Trail from Springer Mountain, GA traveling north through TN and NC. Features many scenic views of surrounding mountains, waterfalls, streams and wildlife. For more information visit [bmta.org](http://bmta.org) and Facebook.

### Piney Knob Bike Trails

9-miles are complete and open. A wonderful spot for hikers and cyclists alike by this summer. When on Hwy 74, heading toward Murphy, take a right at the Casino intersection onto Regal Rd. Travel about .5 miles until you reach Piney Knob Rd on the right. This is a narrow gravel road that is about 3 miles long to get to the parking area of the trails. [www.pineyknobtrails.com](http://www.pineyknobtrails.com)

### Welch Farm River Access

This 57-acre property along the Valley River is conserved and open to the public for fishing, walking, wildlife viewing, or as a boat access. A portion is leased to local farmers and a portion is left wild for the numerous bird species you will encounter. Located directly off Hwy 74 between Andrews and Murphy, and designated by a brown DOT sign. [mainspringconserves.org](http://mainspringconserves.org)

### Mountains-to-Sea Road Bike Route

Murphy is the start of this on-road 736-mile multi-use bicycle route. The route crosses the entire state, from west to east, through the mid-section of North Carolina. All of the routes are detailed in the list of maps provided by the North Carolina Department of Transportation and the maps for the routes and can be ordered at no cost. [ncdot.gov/bikeped](http://ncdot.gov/bikeped)



**TransAmerica Trail**  
[transamtrail.com](http://transamtrail.com)

## FAMILY ATTRACTION

### Ultra Star Multi-Tainment Center

Harrah's Cherokee, hottest new arcade games, Strikes Lounge, boutique bowling, billiards, packages, events, parties. 777 Casino Pkwy Murphy, NC 28906 828-422-5306 [ultrastarnc.com](http://ultrastarnc.com)



## LODGING

## CAMPGROUND

### Murphy Peace Valley KOA Holiday

Peaceful retreat in the heart of the Smoky Mountains. Riverfront RV sites, deluxe cabins next to casino. Pets welcome. 117 Happy Valley Rd. Marble, NC 28905 800-562-9382 [www.koa.com/campgrounds/murphy/](http://www.koa.com/campgrounds/murphy/)



### Valley River RV Resort

All RV, 30/50 amp, WiFi, grills, luxury clubhouse, groups, pool, spa, exercise facilities, fishing lake, pets. 65 Old Tomotla Rd. Marble, NC 28905 828-385-4220 [valleyriverrv.com](http://valleyriverrv.com)

## OUTDOOR ACTIVITY

### Murphy River Walk and Canoe Trail

Beautiful greenway with 2+ miles of walking trails. The trail follows the Valley River and the Hiwassee Rivers. Whether you take the trail on foot or put in for an easy paddle along the canoe trails, you'll enjoy the ecology and cultural heritage along the way.

P.O. Box 1152  
Murphy, NC 28906

### Cherokee Lake Trail (Nantahala National Forest)

Open year-round Picnic, restrooms, drinking water, handicap-accessible, fishing.



## REAL ESTATE

### Carolina Mountain Homes

Experienced real estate since 1978. Great customer service, marketing and negotiating. Licensed in North Carolina and Georgia.  
5530 W U.S. 64 Hwy.  
Murphy, NC 28906  
828-837-7322  
[carolinamtnhome.com](http://carolinamtnhome.com)



## VISITOR INFORMATION



### Murphy Visitor Center and Andrews Rest Area

Tourism information center with locations in Murphy, NC and Andrews, NC.

20 Tennessee St.  
Murphy, NC 28906  
50 Cover Ave.  
Andrews, NC 28901  
828-557-0602  
[visitccnc.com](http://visitccnc.com)

### Andrews Chamber & Welcome Center

Historic Downtown, RailBike Tours, Rafting, Biking, Hiking, Fishing, Shops, Restaurants, Wineries, Breweries, Festivals, Wagon Train.  
955 Main St.  
Andrews, NC 28901  
828-321-3584  
[visitandrewsnc.com](http://visitandrewsnc.com)

### Cherokee County Chamber of Commerce and Welcome Center

On Hwy 64. Visit for resources in our area! Parking for cars and RVs. Pets welcome.  
805 U.S. Hwy 64 W  
Murphy, NC 28906  
828-837-2242  
[CherokeeCountyChamber.com](http://CherokeeCountyChamber.com)



### NC Rest Area

Travel Information available  
Cherokee County at Andrews  
US Hwy 19/129

# Carolina Mountain Homes

Real Estate since 1978

## 828-837-7322

[www.CarolinaMtnHome.com](http://www.CarolinaMtnHome.com)

HERE IS YOUR SIGN  
TO PLAN A  
MOUNTAIN GETAWAY



*Visit Cherokee  
County!*



[WWW.VISITCCNC.COM](http://WWW.VISITCCNC.COM)



85

# SYLVA, DILLSBORO BALSAM & CULLOWHEE

Tuckaseege River



16 miles ← from Cherokee  
.....  
38 miles → to Highlands

- **21 miles from Franklin, NC**

- **These towns are surrounded by the Nantahala National Forest**

- **4 Vibrant Communities:**

- ★ **Balsam** - Includes the highest point along the Blue Ridge Parkway in Jackson County.

- ★ **Cullowhee** - Home of Western Carolina University which offers robust performing arts scene!

- ★ **Dillsboro** - Nestled along the Tuckaseege River, it's famous for pottery shops, and special events: ColorFest, WNC Pottery Festival & December Lights & Luminaries.

- ★ **Sylva** - Sylva's Main Street frames the most photographed Courthouse in NC.

- **Popular Attractions:**

- ★ **Ale Trail** - The famous Ale Trail's main hub is downtown Sylva with 10 craft breweries. Field Guide: [DiscoverJacksonNC.com/AleTrail](http://DiscoverJacksonNC.com/AleTrail)

- ★ **Hike Pinnacle Park, Sylva, NC** - See panoramic views of Sylva, streams & waterfalls. Strenuous Terrain.

- ★ **Greetings from Sylva, NC Mural** - Selfie Time-On Mill Street- across from White Moon Coffee.

- ★ **The American Museum of the House Cat** - Private collection. 828-476-9376, [wnccatmuseum.org](http://wnccatmuseum.org)

- ★ **Mountain Heritage Center** - A regional resource for education, research and history. Located at Western Carolina University.

- ★ **Great Smoky Mountain Railroad** - Fun for the whole family!

[discoverjacksonnc.com](http://discoverjacksonnc.com)  
[visitdillsboro.org](http://visitdillsboro.org)  
[mountainlovers.com](http://mountainlovers.com)



**JACKSON COUNTY  
COURTHOUSE**  
Sylva, NC

**AGRITOURISM**

**The Whee - Market-  
Cullowhee's Craft  
& Farmer's Market**

All year round, every Tuesday.  
3-pm - 6pm.  
113 Market St.  
Cullowhee, NC 28723  
828-476-0334  
[cullowheemarket.org](http://cullowheemarket.org)

**Jackson County  
Farmer's Market**

Farmer's market offering locally grown and crafted products.  
April - October: Wednesdays  
3:30-6:30 at Innovation Station, Dillsboro. Saturdays  
9-Noon at Bridge Park, Sylva.  
November - March, Saturdays  
at Bridge Park, Sylva.  
23 Central St.  
Sylva, NC 28779  
828-393-5236  
[facebook.com/  
TheJacksonCountyFarmersMarket](https://www.facebook.com/TheJacksonCountyFarmersMarket)

**BLUEWAYS**

**Tuckasegee River**

The Tuckasegee, is a popular river for tubing, floating, canoeing, rafting and kayaking.  
[smokymountainblueways.com](http://smokymountainblueways.com)



**CULTURAL/MUSEUM**

**American  
Museum of  
the House**



**Cat**  
Experience a multi-media collection of feline antiques sure to delight, entertain, and educate the cat enthusiast.  
5063 US 441 Hwy S  
Sylva, NC 28779  
828-476-9376  
[wnccatmuseum.org](http://wnccatmuseum.org)

**Mountain Heritage Center**

Extensive displays of Western North Carolina and Southern Appalachian history.  
Western Carolina University  
Second Floor Hunter Library  
176 Central Dr. #240  
Cullowhee, NC 28723  
Call to confirm hours  
828-227-7129  
[wcu.edu/engage/mountain-heritage-center/about-us/  
index.aspx](http://wcu.edu/engage/mountain-heritage-center/about-us/index.aspx)





# BAXLEY'S Chocolates

546 West Main St.  
Sylva, NC 28779  
(828) 631-3379

BaxleysChocolates.com

Handmade Small Batch Chocolates

*Crafting Sweet Memories*

Open Tuesday-Saturday

## DINING

### City Lights Cafe

Breakfast, lunch,  
dessert, Sunday  
Brunch, coffee, espresso, beer,  
wines, pet-friendly patio,  
gluten-free, vegetarian options,  
catering, Wi-Fi.

3 E Jackson St.  
Sylva, NC 28779  
828-587-2233  
citylightscafe.com



### Jack the Dipper Ice Cream

Home of the Warm Waffle  
Cone.

170 E Sylva Shopping Center  
Sylva, NC 28779  
828-586-9441

### Lulu's On Main

Award winning  
dining, featuring  
specials

including steaks, seafood,  
chicken and vegetarian  
favorites, scrumptious  
homemade desserts.

Covered outdoor seating.

678 W Main St.  
Sylva, NC 28779  
828-586-8989  
lulusonmain.com



## EVENT/WEDDING

### Baxley's Chocolates

We make premium,  
traditional handmade  
chocolates and brittles,  
crafting sweet memories  
is our business!

546 W Main St.  
Sylva 28779  
828-631-3379 •  
baxleyschocolates.com



## CITY LIGHTS CAFÉ

Eats, Spirits, Espresso Bar

Downtown Sylva on Spring Street  
CityLightsCafe.com



### OPEN EVERY DAY

*Crepes, Paninis, Taqueria,  
Soups, Salads, Wine, Beer,  
Lattes, Growler Filling*

# NEWLY RENOVATED 2022

At Clarion Pointe®, we provide elevated essentials in just the right places for a sharper, more connected stay. Enjoy upscale accommodations with contemporary design touches, on-demand connectivity, modern fitness essentials, flexible meeting space, and curated food and beverage options. Rewind by the fire pit or take a dip in our seasonal outdoor pool. Being the closest hotel to the entrance of the Blue Ridge Parkway means you'll have easy access to outdoor adventure!

**stay on pointe.™**

*Formerly Quality Inn of Sylva*

**828.586.3315**  
2807 Hwy 74-East  
Sylva, NC 28779





# Best Western PLUS<sup>®</sup>

248 WBI Drive, Dillsboro, NC 28725

828.586.6060

[bwriverscape.com](http://bwriverscape.com)





AN **IHG**<sup>®</sup> HOTEL

26 Rufus Robinson Road  
Sylva, NC 28779  
828.631.1111

## FAMILY ATTRACTION

### American Museum of the House Cat

Experience a multi-media collection of feline antiques sure to delight, entertain, and educate the cat enthusiast. 5063 US 441 Hwy S Sylva, NC 28779 828-476-9376 [wnccatmuseum.org](http://wnccatmuseum.org)



### Comfort Inn

Close to the beautiful Smoky Mountains, Western Carolina University, Balsam Mountain Preserve, Nantahala Forest, Cherokee, hiking, and fishing. 1235 E Main St. Sylva, NC 28779 828-477-4950 • 800-300-8800 [choicehotels.com/nc732](http://choicehotels.com/nc732)



## LODGING

### Best Western Plus River Escape Inn & Suites

Balcony suites overlooking the picturesque Tuckasegee River available. Close to the action, far from the crowds! 248 WBI Dr. Dillsboro, NC 28725 828-586-6060 • 800-780-7234 [bwwiverescape.com](http://bwwiverescape.com)

### Holiday Inn Express & Suites

Near Blue Ridge Parkway, Great Smoky Mountains National Park, shopping. Pool, spa, hot tub, Wi-Fi, complimentary breakfast bar. 26 Rufus Robinson Rd. Sylva, NC 28779 828-631-1111 • 800-holiday [hiexpress.com/Sylva/HIExpress](http://hiexpress.com/Sylva/HIExpress)

### Clarion Pointe

NEWLY RENOVATED 2022. Upscale accommodations, fitness essentials, meeting space, firepit, outdoor pool. Closest hotel to the Blue Ridge Parkway. 2807 Hwy 74 E Sylva, NC 28779 828-586-3315 [choicehotels.com](http://choicehotels.com)

### Laurel Bush Riverfront Cabins

Streams and Dreams! Cozy riverfront cabins and tiny homes conveniently located on the Tuckasegee River in Sylva. De-stress by the river sounds. All attractions close. 282 Tunnel Mtn. Rd. Sylva, NC 28779 828-676-9901 [laurelbushcabins.com](http://laurelbushcabins.com)



*Come explore Sylva,  
North Carolina and  
get a taste of the  
Great Smoky Mountains.*

- Closest hotel to WCU
- Free hot breakfast
- Free Wi-Fi
- Seasonal outdoor pool

1235 Main Street, Sylva, NC 28779  
828-447-4950 • [choicehotels.com](http://choicehotels.com)

## CAMPGROUND

**Moonshine Creek Campground**  
Cool and secluded on mountain stream five minutes from Blue Ridge Parkway, RV, tent, cabins. Pets welcome.  
2486 Dark Ridge Rd.  
Sylva, NC 28779  
828-586-6666  
[moonshinecreek.com](http://moonshinecreek.com)

## OUTDOOR ACTIVITY

**Appalachian Mural Trail**  
Appalachian historical murals within driving distance of the Blue Ridge Parkway. Map has parkway milemarker directions.  
828-293-2239  
[muraltrail.com](http://muraltrail.com)

## OUTDOOR EVENTS

**Concerts on the Creek**  
Events are free and open to the public with donations encouraged. Bring a chair or blanket and enjoy the shows. No alcohol, smoking or coolers are allowed. Dogs must be on a leash. Food and Music. Concerts are located at the Bridge Park gazebo in Sylva every Friday from 7-9 p.m., Memorial Day through Labor Day. Check website for current details.  
828-586-2155  
[mountainlovers.com/on-the-creek](http://mountainlovers.com/on-the-creek)

## RAFTING/KAYAKING

**Smoky Mountain River Adventures**  
Perfect for beginner and intermediate paddlers. Bring the family for a scenic river trip! Pets welcome.  
5036 U.S. Hwy 74 E (Check Google Maps)  
Whittier, NC 28789  
828-586-5285 • 888-785-2662  
[smokymountainriveradventures.com](http://smokymountainriveradventures.com)

## REAL ESTATE



**Western Carolina Properties - Dillsboro**  
Real estate in Sylva, Cullowhee, Bryson City, Franklin, Webster, and throughout WNC Mountains.  
78 Front St.  
Dillsboro, NC 28725  
828-586-3442  
[searchwnc.com](http://searchwnc.com)

## SHOPPING

**Baxley's Chocolates**  
We make premium, traditional handmade chocolates and brittles, crafting sweet memories is our business!  
546 W Main St.  
Sylva, NC 28779  
828-631-3379  
[baxleyschocolates.com](http://baxleyschocolates.com)



**Lazy Bear Trading Company**  
Gifts, souvenirs, gourmet specialties, sample tastings, dressings, jams, sauces, local roasted coffee, home accents.  
104 Front St.  
Dillsboro, NC 28725  
828-356-6198  
[facebook.com/LazyBearGeneralStore](https://facebook.com/LazyBearGeneralStore)

## THEATER

**WCU John W. Bardo Fine & Performing Arts Center**  
Western Carolina University  
828-227-3591  
[wcu.edu/bardo-arts-center](http://wcu.edu/bardo-arts-center)

CASHIERS | CHEROKEE | DILLSBORO | SYLVA



## JUMP RIGHT IN. THE ADVENTURE'S GREAT.

Whether you're looking for a nonstop outdoor adventure, an affordable family trip, or a romantic weekend getaway, Jackson County is the place you'll find exactly what you need.

Visit [DiscoverJacksonNC.com](http://DiscoverJacksonNC.com) to plan your next getaway.

### VISITOR INFORMATION

#### Jackson County Chamber & Visitor Center

NC Trout Capital!  
Stop by for a free fly-fishing map, dining guide, waterfall map.  
773 W Main St.  
Sylva, NC 28779  
828-586-2155 • 800-962-1911  
[mountainlovers.com](http://mountainlovers.com)



#### Jackson County TDA

From epic hiking and the WNC Fly Fishing Trail, to unique breweries, it's your escape.  
116 Central St.  
Sylva, NC 28779  
828-848-8711  
[discoverjacksonnc.com](http://discoverjacksonnc.com)



#### Town of Dillsboro

Rediscover the quaint mountain village of Dillsboro, NC! Eat, Shop, Stay, Play in Dillsboro.  
42 Front St.  
Dillsboro, NC 28725  
828-586-1439  
[dillsboronc.info](http://dillsboronc.info)

#### Dillsboro Merchants Association

Visit charming Dillsboro, SHOP, DINE, RAFT, STAY.  
PO Box 624  
Dillsboro, NC 28725  
828-631-0900  
[visitdillsboro.org](http://visitdillsboro.org)



Cowee Mountain  
Sylva, NC



# Waynesville, Maggie Valley & Canton



31 miles



Asheville

26 miles



Cherokee

- **Only 37 miles from Franklin, NC**

- **Appalachian experience filled with Outdoor Adventure & Family activities!**

- **3 Vibrant Communities:**

- ★ **Waynesville** - Picturesque community that embodies the Culture and Heritage of Western NC.

- ★ **Maggie Valley** - Nestled in Nature's Glory!

- ★ **Canton** - National Register of Historic Places.

- **Popular Attractions:**

- ★ **Blue Ridge Parkway** - Reaches its highest elevation in Haywood County, [blueridgeparkway.org](http://blueridgeparkway.org)

- ★ **Cataloochee Ski Area** - Enjoy seasonal skiing and snow tubing in Maggie Valley. (828) 926-0285, [cataloochee.com](http://cataloochee.com)

- ★ **Cataloochee Valley** - Famous for its elk population and elk sightseeing tours. [visitncsmokies.com](http://visitncsmokies.com)

- ★ **Great Smoky Mountains National Park** - Encompasses over one-half million acres. [nps.gov/grsm](http://nps.gov/grsm)

- ★ **Lake Logan** - 260 acres of land situated in a pristine valley near the Blue Ridge Parkway.

- ★ **Pigeon River** - Flows from North Carolina to east Tennessee.

[visitsmokies.com](http://visitsmokies.com)  
[haywoodchamber.com](http://haywoodchamber.com)  
[maggievalley.org](http://maggievalley.org)



Downtown  
Waynesville, NC

AGRITOURISM

**Boyd Mountain  
Christmas  
Tree Farm**

Choose-n-Cut  
Frasier Firs, paved  
parking, restrooms, gift items in  
hospitality tent. Dogs on leash  
welcomed. Mid November thru  
first week in December.

Located at:  
Boyd Mountain Log Cabins  
445 Boyd Farm Rd.  
Waynesville, NC 28785  
828-926-1575 • 828-926-8888  
[boydmountain.com](http://boydmountain.com)



**Buffalo Creek  
Vacations**

Come see our  
American bison.  
Interact with mini-donkeys, goats,  
mini-horses and llamas. Call for  
reservations.  
Clyde, NC 28721  
828-550-0960  
[buffalocreekvacationsNC.com](http://buffalocreekvacationsNC.com)



**Haywood's Historic  
Farmer's Market**

Fresh local produce, seafood,  
baked goods, goat cheese,  
herbal products, meat, eggs,  
plants, flowers, preserves,  
honey and heritage crafts. Live  
music. Saturdays, 9am - 12pm,  
April - December. Rain or shine.  
250 Pigeon Street (in the parking  
lot of the Hart Theater).  
Waynesville, NC 28785  
828-356-5498  
[waynesvillefarmersmarket.com](http://waynesvillefarmersmarket.com)

**Waynesville  
Tailgate Market**

Fruits, vegetables, black walnuts,  
organic food and  
other homemade products.  
Wednesday & Saturday,  
8-12 noon; Mid-May to  
end of October.  
171 Legion Drive at the American  
Legion in Waynesville behind  
Bogart's restaurant.  
828-456-1830  
[visitsmokies.com/attractions/](http://visitsmokies.com/attractions/)  
[waynesville-tailgate-market/](http://waynesville-tailgate-market/)

## CULTURAL/MUSEUM

### **Canton Area Historical Museum**

Displays focusing on the cultural history of Canton and Haywood County.  
36 Park St.

Canton, NC 28716  
828.646.3412

[blueridgeheritage.com/  
destinations/canton-area-  
historical-museum](http://blueridgeheritage.com/destinations/canton-area-historical-museum)



### **Museum of North Carolina Handicrafts at the Shelton House**

Featuring unique works from some of the state's most acclaimed artisans.

49 Shelton St.  
Waynesville, NC 28786  
828-452-1551

[sheltonhouse.org](http://sheltonhouse.org)

## DINING

### **Fat Buddies Ribs and BBQ of Waynesville**

Family-style BBQ, baby back ribs, smoked pork, smoked beef, smoked chicken, hand-cut steaks.

193 Waynesville Plaza  
Waynesville, NC 28786  
828-456-6368

[fatbuddiesribsandbbq.com](http://fatbuddiesribsandbbq.com)

### **Jack the Dipper Ice Cream**

Home of the Warm Waffle Cone.

76 Waynesville Plaza  
Waynesville, NC 28786  
828-246-9766

[jackthedipper.com](http://jackthedipper.com)

## LODGING

### **Andon-Reid Inn**

Top 25 USA B&B, centrally located, seven elegant en-suite rooms, delicious complimentary breakfast, mountain views.

92 Daisy Ave.  
Waynesville, NC 28786  
828-452-3089 • 800-293-6190  
[andonreidinn.com](http://andonreidinn.com)

## BOYD MOUNTAIN

### Log Cabins & Christmas Tree Farm



Waynesville/Maggie Valley, NC

828.926.1575

[BOYDMOUNTAIN.COM](http://BOYDMOUNTAIN.COM)

### **Boyd Mountain Log Cabins**

Nine historic log cabins on 150 acres with fishing, hiking and a Christmas tree farm.

445 Boyd Farm Rd.  
Waynesville, NC 28785  
828-926-1575

[boydmountain.com](http://boydmountain.com)



### **Best Western Smoky Mountain Inn**

Gateway to the Smokies, breathtaking mountain views, closest hotel to the Blue Ridge Parkway.

130 Shiloh Trail  
Hwy 74, Exit 98  
Waynesville, NC  
28786 828-456-4402  
[bwsmokymountaininn.com](http://bwsmokymountaininn.com)



## LODGING

### Buffalo Creek Vacations

Where the buffalo roam and we welcome guests to stay in cabins or a caboose. Call or check our website. Clyde, NC 28721  
828-550-0960  
[buffalocreekvacationsnc.com](http://buffalocreekvacationsnc.com)



### Country Cabins

Authentic log cabins in mountain setting. Fireplaces, hot tubs, rocking chairs, covered porches, open year-round. Pets welcome. 171 Bradley St. Maggie Valley, NC 28751  
828-926-0612 • 888-222-4611  
[countrycabinsmv.com](http://countrycabinsmv.com)

### Oak Park Inn

Downtown with old-fashioned, friendly service, enjoy walk to shops, boutiques, restaurants, pubs, movie, library, churches. 37 bedroom inn on Main Street. 196 S Main St. Waynesville, NC 28786  
828-456-5328  
[oakparkinn-waynesville.com](http://oakparkinn-waynesville.com)

### The Swag

Romantic, hiking, hideaway, Great Smoky Mountains, open April through December 10th. Reservations required. 5,000 foot elevation. 2300 Swag Rd. Waynesville, NC 28785  
828-926-0430 • 800-789-7672  
[theswag.com](http://theswag.com)

## OUTDOOR ACTIVITY

### Buffalo Creek Vacations

Visit our Bison Ranch with advanced reservations. See bison, llamas, donkeys, goats, and mini-horse rides available. Ask about feeding animals. Call or check our website. Clyde, NC 28721  
828-550-0960  
[buffalocreekvacationsnc.com](http://buffalocreekvacationsnc.com)



## MOTORCYCLE

### Smoky Mountain Steel Horses

Indian Motorcycle, Slingshot & Pre-owned Harley-Davidson Dealer. Sales, Service, & Apparel. 82 Locust Dr. Waynesville, NC 28786  
828-452-7276  
[smokymountainsteelhorses.com](http://smokymountainsteelhorses.com)



### Soco Crafts & Tower

Come see the best view in the Smokies from our 9-story observation tower! Open April - November since 1947. 6638 Soco Rd. Maggie Valley, NC 28751  
828-926-2807  
[sococrafts@outlook.com](mailto:sococrafts@outlook.com)



A full service Indian, Slingshot and pre-owned motorcycle dealer in the heart of WNC. Motorcycle Sales, Parts, Apparel & Service for all motorcycles.

82 Locust Drive, Waynesville, NC  
SMSh.co • 828.452.7276



## OUTDOOR ACTIVITY

### Sunburst (Pisgah National Forest)

Open May 1- October  
Camping, picnic, restrooms, trailer space, water, fee required.



### Sunburst Falls

A beautiful roadside waterfall that flows under a 1930's era stone bridge. 37 miles from Asheville - south of Canton along NC Hwy. 215 - it's 7.4 miles south of Lake Logan. Hwy. 215  
Canton, NC 28716

### Cataloochee

Camping, fishing, historical structures, horse camp, self-guiding auto tour, wildlife-watching. 39 miles from Cherokee, 65 miles from Gatlinburg, and 21 miles from Waynesville.

[nps.gov/grsm/planyourvisit/cataloochee.html](http://nps.gov/grsm/planyourvisit/cataloochee.html)

### Mouse Creek Falls

Big Creek Trail follows an old railroad grade. At 1.4 miles the trail passes Midnight Hole Falls, a deep picturesque pool a 6' falls. At 2.1 miles a left leads to a bench where hikers can rest and view Mouse Creek falls. The falls are 45' in height.

[nps.gov/grsm/planyourvisit/mouse-creek-falls.html](http://nps.gov/grsm/planyourvisit/mouse-creek-falls.html)

### Mountains-to-Sea Trail

This trail is North Carolina's state hiking trail. Stretches 1175 miles from the Great Smoky Mountains to the Outer Banks, stopping at many of our state's most beautiful places along the way.

[mountainstotheseatrail.org](http://mountainstotheseatrail.org)

## SHOPPING

### Downtown Waynesville Association

Eat, drink, shop, play. Tree-lined brick sidewalks. Views of the Smokies and Blue Ridge Mountains.

9 S Main St. Suite 200  
Waynesville, NC 28786  
828-456-3517  
[downtownwaynesville.com](http://downtownwaynesville.com)

### Mast General Store

Mercantile packed with traditional fashions, comfortable footwear, hiking gear, hundreds of candies, & country gourmet foods. Pets welcome.

63 N Main St.  
Waynesville, NC 28786  
828-452-2101  
[mastgeneralstore.com](http://mastgeneralstore.com)



## VISITOR INFORMATION

### Town of Maggie Valley

Maggie Valley Festival Grounds hosts diverse choice of festivals, shows & fairs such as Plott Fest. 3987 Soco Rd.  
Maggie Valley, NC 28751  
828-926-0866

### Haywood Chamber of Commerce

Leadership, advocacy, development, innovation, entrepreneurship magic, mountain living, vacationing, hospitality, adventure. Pristine waterfalls, panoramic vistas. 28 Walnut St.  
Waynesville, NC 28786  
828-456-3021  
[haywoodchamber.com](http://haywoodchamber.com)

# *You Can* GO BACK IN TIME

Quality goods, fair prices, old-fashioned friendly service. As it turns out, time travel is possible. Stop in for traditional fashions, comfortable footwear, trail and travel gear, great gift ideas, and hundreds of favorite candies.



## **MAST GENERAL STORE<sup>®</sup>** — SINCE 1883 —

63 N. Main St. • Downtown Waynesville • (828) 452-2101

MASTGENERALSTORE.COM •    

## VISITOR INFORMATION



### **Haywood County Tourism Development Authority**

We invite you to experience our local brews, shopping, galleries, horseback riding, hiking.

1110 Soco Rd.

Maggie Valley, NC 28751

828-944-0761

[visitncsmokies.com](http://visitncsmokies.com)

### **Maggie Valley Chamber of Commerce**

A perfect spot to reflect, renew and rediscover what vacations used to be.

2781 Soco Rd.

Maggie Valley, NC 28751

828-926-1686 • 800-624-4431

[maggievalley.org](http://maggievalley.org)

## Did You Know?

- *Haywood County (Waynesville and Maggie Valley) has the highest median elevation of any county east of the Rockies.*
- *Maggie Valley is the highest elevated incorporated valley (3,023 ft.) in the United States.*
- *Waynesville is the third largest town in Western North Carolina behind the cities of Asheville and Hendersonville.*



Photo by Daniel Hass

Waynesville, NC

VIEW  
WAYNESVILLE  
ELEV. 2644  
ELEV. HERE 4110



# NEARBY NEIGHBORS

## GEORGIA

### FAMILY ATTRACTION

#### Goats on the Roof

Goats, gifts, ice cream, fudge, sweets, candy, mining, t-shirts, jams and jellies, jarred goods, family and novelty gifts.

3026 Hwy 441 S  
Tiger, GA 30576  
706-782-278  
[goats-on-the-roof.com](http://goats-on-the-roof.com)

#### Hillside Orchard Farms, Inc.

Family, fried pies, fritters, Locally made jams, pickles, relish, ciders, Seasonal corn maze, hayrides, gem mine, baryard, train, field trips.

18 Sorghum Mill Dr.  
Lakemont, GA 30552  
706-782-2776  
[hillsideorchard.com](http://hillsideorchard.com)

### CULTURAL/MUSEUMS

## Foxfire

#### Foxfire Museum & Heritage Center

Explore our Appalachian Village with over 20 fascinating log structures. Bring the kids to play in our miniature cabins and try walking on stilts. Hike through history and see real Appalachia! 98 Foxfire Ln. Mountain City, GA 30562 706-746-5828 [foxfire.org](http://foxfire.org)

### VISITOR INFORMATION

#### Rabun County Chamber of Commerce & Welcome Center

706-782-4812  
[rabunchamber.com](http://rabunchamber.com)

### DINING

#### Cupboard Cafe

Deliciously Southern. Friendly, efficient service. Breakfast all day. One-of-a-kind gift shop. 7388 Hwy 441 Dillard, GA 30537 706-746-5700 [cupboardcafeandgifts@gmail.com](mailto:cupboardcafeandgifts@gmail.com) [dillardgeorgia.com/cupboard-cafe](http://dillardgeorgia.com/cupboard-cafe)

### GOLF COURSE

#### Sky Valley Country Club

Championship Golf Course open to the public daily year-round with competitive golf rates. Off of Georgia Highway 246, 20 miles from Franklin, NC. 568 Sky Valley Way #1 Sky Valley, GA 30537 706-746-5302 [skyvalleycountryclub.com](http://skyvalleycountryclub.com)



Discover  
**Foxfire**  
Appalachian Village & Gift Shop

Mountain City, Georgia  
[www.foxfire.org](http://www.foxfire.org)  
706.746.5828



## LODGING

### **River Vista RV Resort**

Five-star RV resort with cabin rentals, featuring large level sites and fully furnished cabins. Pets welcome.

960 Hwy 246 (GPS Location)  
20 River Vista Dr.  
Dillard, GA 30537  
706-746-2722 • 888-850-7275  
[rvmountainvillage.com](http://rvmountainvillage.com)

### **Mountain Aire Cottages & Inn**

Beautiful and affordable 1 or 2 bedroom cottages, or individual motel rooms. All interior strictly non-smoking. 10-minute walk to downtown Clayton. Sorry, no pets allowed. 18 Motel Dr. Clayton, GA 30523  
706-782-9568  
[mtnaire12@gmail.com](mailto:mtnaire12@gmail.com)  
[www.mountainairecottages.com](http://www.mountainairecottages.com)

## NORTH CAROLINA

## GENERAL SERVICE

### **JB Media Institute, LLC**

Internet marketing training online or in-person; strategy, research, SEO, content creation, digital advertising, and social media.

915 Haywood Rd. Suite 101  
Asheville, NC 28806  
828-490-9299  
[jbmediagrouppllc.com](http://jbmediagrouppllc.com)

## LODGING

### **Shoji Spa and Lodge**

Accommodations, 26 massage therapists, private outdoor soaking tubs, sauna, minutes to Asheville. Unforgettable mountainside experience.

96 Avondale Heights Rd.  
Asheville, NC 28803  
828-299-0999  
[shojiretreats.com](http://shojiretreats.com)

## OUTDOOR ACTIVITY

## SELF-GUIDED TOUR



### **Blue Ridge Music Trails**

Your guide to traditional music of the North Carolina mountains and foothills. Find concerts, jams, event listings and more at [blueridgemusicnc.com](http://blueridgemusicnc.com)

### **Blue Ridge Craft Trails**

Travel the Blue Ridge Craft Trails in NC's mountains and foothills to visit artists in their studios, shop galleries with local artwork, and discover scenic beauty along the way. [blueridgecrafttrails.com](http://blueridgecrafttrails.com)



### **Appalachian Mural Trail**

Tour outdoor historical murals, see outstanding artwork by local artists near the Blue Ridge Parkway. 828-293-2239  
[muraltrail.com](http://muraltrail.com)

## VISITOR INFORMATION

### **Blue Ridge National Heritage Area**

Discover the natural and cultural treasures of the NC mountains and foothills. Get inspired and plan your trip at [blueridgeheritage.com](http://blueridgeheritage.com)



### **Blue Ridge Parkway Association**

Print and digital resources for your Parkway journey. Lodging, maps, attractions and more. 828-670-1924  
[blueridgeparkway.org](http://blueridgeparkway.org)







# Directory

## BRYSON CITY

### AGRITOURISM (See Also Tours)

Swain County Farmer's Market 29

### BLUEWAYS

The Nantahala River 29

### CULTURAL/MUSEUM

Fly Fishing Museum of the Southern Appalachians 29

Smoky Mountain Train Museum 29

Swain County Heritage Museum 29

### DINING

Big Wesser 29

Fryemont Inn 29

Heavenly Fudge Depot & Shoppe 29

Pop-N-Jacks Popcorn 29

River's End Restaurant (NOC) 29

### EVENT/WEDDING

McKinley Edwards Inn 30

### GEM MINING

Deep Creek Tube Center & Campground 30

### LODGING

Fryemont Inn 30

McKinley Edwards Inn 30

Sleep Inn 30

NOC Cabins 30

Nantahala Cabins 30

Calhoun House Inn & Suites 30

Great Smokys Cabin Rentals 32

Sky Ridge Yurts 32

Smoky Mountain Modern 32

Two Rivers Lodge 32

Watershed Cabins 32

Stonewood Cabins & Watershed Resort 32

### CAMPGROUND (See Also Rafting)

Brookside Campground & Rafting 32

Deep Creek Tube Center & Campground 34

Gorgeous Stays 34

### BICYCLE/MOTORCYCLE

NOC Outdoor Adventure 34

## **FAMILY ATTRACTION/TRAIN EXCURSION**

Great Smoky Mountains Railroad	34
--------------------------------	----

## **JEEP EXCURSIONS**

Wildwater Nantahala Gorge Adventure Center	35
--	----

## **TOURS/JEEP TOURS**

Wildwater Nantahala Gorge Adventure Center	35
--	----

## **RAFTING/KAYAKING/CANOEING/TUBING**

Brookside Campground & Rafting	35
Carolina Outfitters Whitewater Rafting	35
Deep Creek Tube Center & Campground	36
Nantahala Outdoor Center	35
Rolling Thunder River Company	35
Wildwater Nantahala Gorge Adventure Center	36

## **ZIPLINING**

Nantahala Outdoor Center	36
Treetop Adventure Nets	36
Wildwater Nantahala Gorge Adventure Center	36

## **SHOPPING**

Lazy Bear Trading Company	38
NOC Outfitters Store	38
Pop-N-Jacks Gourmet Popcorn	38
Uncle Bunky's T-Shirt Shop	38
Wesser General Store	38

## **REAL ESTATE**

Good Life Real Estate - Your Boutique Mtn. Firm	38
---	----

## **VISITOR INFORMATION**

Swain County Visitor Center	38
-----------------------------	----

## **CHEROKEE**

### **BLUEWAYS**

Oconaluftee River	41
-------------------	----

### **CASINO**

Harrah Cherokee Casino and Resort	41
-----------------------------------	----

### **CULTURAL/MUSEUM**

Mountain Farm Museum	41
Museum of the Cherokee Indian	41
Oconaluftee Indian Village Living Museum	41

# CHEROKEE

## DINING

Harrah's Cherokee Casino and Resort	41
Brio Italian Grille, Gordon Ramsay Food Market, Ruth's Chris Steak House, Guy Fieri's Kitchen + Bar, Noodle Bar, Lobby Cafe, Soundbytes, Starbucks, Dunkin' Donuts Express	

## FAMILY ATTRACTION

Mountainside Theatre	42
Oconaluftee Indian Village	42
Ultra Star Multi-Tainment Center (Cherokee)	42

## FISHING/HIKING/GUIDES

Ultra Star Multi-Tainment Center (Cherokee)	42
---	----

## GOLF COURSES

Sequoyah National Golf	42
------------------------	----

## LODGING

Fairfield Inn and Suites	42
Hampton Inn Cherokee	42
Rolling Hills Lodge	42

## CAMPGROUND (See Also Rafting)

Fort Wilderness RV Park	42
Smokemont	44

## HORSEBACK RIDING

Smokemont Riding Stables	46
--------------------------	----

## SHOPPING

Native American Craft Shop	46
Qualla Arts and Crafts Mutual	46
Traditional Hands Native American Jewelry & Art Gallery	46

## VISITOR INFORMATION

Cherokee Chamber of Commerce	46
Cherokee Welcome Center	46
EBCI Fisheries & Wildlife Management	46

## FONTANA, ROBINSVILLE, & LAKE SANTEETLAH

### AGRITOURISM

Graham County Farmer's Market 49

### ARTS/CRAFTS

Stecoah Valley Cultural Arts 49

### BLUEWAYS

The Cheoah River 49

Lake Santeetlah 49

### CULTURAL/MUSEUM

Graham County Museum of Prehistoric Relics 50

Junaluska Memorial & Museum 50

TVA Fontana Dam Museum & Visitor's Center 50

### DINING

Dragon's Den Grill 50

Mountview Bistro 51

Tapoco Tavern 51

Wildwood Grill 51

### FISHING/HIKING/GUIDES

Fontana Marina Excursions & Boat Rentals 52

### LODGING

Deal's Gap Motorcycle Resort 51

Fontana Village Resort & Marina 51

Historic Tapoco Lodge 51

Rivers Edge Treehouse Resort 51

Snowbird Mountain Lodge 51

### SHOPPING

Wehrloom Honey 54

### VISITOR INFORMATION

Fontana Dam & Visitor's Center 54

Graham County Travel & Tourism 54

Tail of the Dragon 54

Town of Lake Santeetlah TDA 55

Town of Robbinsville 55



## FRANKLIN & NANTAHALA

### AGRITOURISM (See Also Tours)

Franklin Tailgate Market	57
Skyvue Ranch Alpacas	57

### AIRPORT

Macon County Airport	57
----------------------	----

### ANTIQUES/THRFT

Nestfeathers	57
The Classy Flea	57
Whistle Stop Depot	57

### BLUEWAYS

The Little Tennessee River	58
Nantahala Lake	58

### BREWERY/WINERY

Lazy Hiker Brewing Company	58
----------------------------	----

### CULTURAL/MUSEUM

Cowee School Arts & Heritage Center	58
Scottish Tartans Heritage Museum	58
Taste of Scotland and Celtic Festival	58

### DINING

828 Cafe	58
Asian King Buffet Sushi & Chinese Cuisine	59
Cleaver's	59
Fat Buddies Ribs & BBQ (Franklin)	59
Gazebo Creekside Cafe	59
Honeysuckle Bakehouse	59
Jack the Dipper (Franklin)	59
Las Margaritas	60
Lazy Hiker Brewing Company	60
Sakura Japanese Restaurant	60
Siam Thai Cuisine	60
Sunset Restaurant	60

### GEM MINING (See Also Shopping)

Artisan's Mineral & Gemstone Gallery	61
Gold City Gem Mine	61
Mason's Ruby and Sapphire Mine	61
Primitive Outback Kayaking & Gem Mining	61
Rose Creek Mine	61

Ruby City Gems	61
Sheffield Gem Mine	61
<b>GENERAL SERVICES</b>	
Franklin Office Supply	61
Jeff Johnson Timber Frames	61
Mountain Power Washing	62
Rose Room Spa	62
St. John's Cartoogechaye Episcopal Church	62
Tiny Life Homes	62
<b>LODGING</b>	
Andy's Trout Farm	62
A Sapphire Inn	62
Big Bear Cabin Rentals	62
Buckwood Log Lodge	62
Colonial Inn Franklin	62
Franklin Terrace B&B	62
River Run Cabins	63
Sleepy Hollow Mountain Cabins	63
<b>CAMPGROUNDS (See Also Rafting)</b>	
Andy's Trout Farm	63
Cullasaja River RV Park	63
Downtown RV Park	63
Franklin RV Park & Campground	63
High Country Haven Camping & Cabins	63
Mi Mountain Campground	63
Old Corundum Millsite Campground	63
Rose Creek Campground & Cabins	63
Whistle Stop Depot	64
<b>RAFTING/KAYAKING/CANOEING/TUBING</b>	
Primitive Outback Kayaking & Gem Mining	64
<b>QUILTING</b>	
A Stitch In Time	65
<b>REAL ESTATE</b>	
RE/MAX Elite Realty	65
Sheila Myers - Keller Williams Realty	65
Sunset Ridge Motorcoach Resort	65
<b>SHOPPING</b>	
Appalachian Growers	65
Franklin Office Supply	65

## FRANKLIN & NANTAHALA

### SHOPPING

Friends of the Macon County Public Library	65
Ruby City Gems	65

### THEATER

Smoky Mountain Center for the Performing Arts	66
---	----

### VISITOR INFORMATION

Franklin Chamber of Commerce	66
Franklin/Nantahala Tourism Development Committee	66
Smoky Mountain Host Visitor Center	68

## HAYESVILLE & BRASSTOWN

### ARTS/CRAFTS

John C. Campbell Folk School	71
------------------------------	----

### CULTURAL/MUSEUM

Clay County Historical Museum	71
Historic Hayesville	71

### DINING

Carlotta's French Market	71
The Copper Door	71

### EVENT/WEDDING

Clay County Courthouse/Beal Center	71
------------------------------------	----

### HORSEBACK RIDING

Chunky Gal Stables	72
--------------------	----

### LODGING

Deerfield Inn	72
Hinton Center	72

### THEATER

Peacock Performing Arts Center	73
--------------------------------	----

### VISITOR INFORMATION

Clay County Chamber of Commerce	75
Clay County Communities Revitalization Association	75
Clay County Travel & Tourism	75

## HIGHLANDS, CASHIERS, GLENVILLE, SAPPHIRE & SCALY MOUNTAIN

### BLUEWAYS

Lake Glenville 77

### CULTURAL/MUSEUM

Highlands Museum & Historical Village 77

Zachery Tolbert House Museum 77

### DINING

Annie's Cafe 77

### GEM MINING

Jackson Hole Trading Post 77

### FAMILY ATTRACTION

Highlands Outpost 78

### LODGING

Buckwood Log Lodge 78

Fire Mountain Inn, Cabins & Treehouses 78

Hotel Cashiers 78

### SKIING/SNOW & SUMMER TUBING/ICE SKATING

Highlands Outpost 78

### ZIPLINING

Highlands Aerial Park 79

### THEATER

Highlands Playhouse 79

### VISITOR INFORMATION

Cashiers Area Chamber of Commerce 79

Highlands Chamber of Commerce & Visitor Center 79

## MURPHY & ANDREWS

### AGRITOURISM

The Murphy Farmer's Market 81

Visit NC Farms 81

### ARTS/CRAFTS

John C. Campell Folk School 81

# MURPHY & ANDREWS

## ARTS/CRAFTS

Olive's Porch 81

## BREWERY/WINERY/DISTILLERY

FernCrest Winery 82

Hoppy Trout Brewing Company 82

## CASINO

Harrah's Cherokee Valley River Casino and Hotel 82

## CULTURAL/MUSEUM

Andrews Art Museum 82

Cherokee County Historical Museum 82

## DINING

Harrah's Cherokee Valley River Casino and Hotel 82

Nathan's Famous, Panda Express, Earl of Sandwich,  
Starbucks, Moe's Southwest Grill

The Landing Cafe, Ultra Star Multi-Tainment Center 82

Hoppy Trout Brewing Company 82

## EVENT/WEDDING

Hawkesdene 82

McGuires Millrace Farm 82

## FAMILY ATTRACTION

Ultra Star Multi-Tainment Center (Murphy) 83

## CAMPGROUNDS

Murphy Peace Valley KOA Holiday 83

Valley River RV Resort 83

## REAL ESTATE

Carolina Mountain Homes 84

## VISITOR INFORMATION

Andrews Chamber of Commerce & Welcome Center 84

Cherokee County Chamber of Commerce & Welcome Center 84

Murphy Visitor Center and Andrews Rest Area 84

NC Rest Area 84

## SYLVA, DILLSBORO, BALSAM & CULLOWHEE

### AGRITOURISM

Jackson County Farmer's Market	87
The Whee-Market-Cullowhee's Craft & Farmer's Market	87

### BLUEWAYS

Tuckaseegee River	87
-------------------	----

### CULTURAL/MUSEUM

American Museum of the House Cat	87
Mountain Heritage Center	87

### DINING

City Lights Cafe	88
Jack the Dipper Ice Cream (Sylva)	88
Lulu's on Main	88

### EVENT/WEDDING

Baxley's Chocolates	88
---------------------	----

### FAMILY ATTRACTION

American Museum of the House Cat	92
----------------------------------	----

### LODGING

Best Western Plus River Escape Inn & Suites	92
Clarion Pointe	92
Comfort Inn	92
Holiday Inn Express & Suites	92
Laurel Bush Riverfront Cabins	92

### CAMPGROUNDS

Moonshine Creek Campground	93
----------------------------	----

### RAFTING/KAYAKING/CANOEING/TUBING

Smoky Mountain River Adventures	93
---------------------------------	----

### TOURS/SELF-GUIDED

Appalachian Mural Trail	93
-------------------------	----

### REAL ESTATE

Western Carolina Properties - Dillsboro	93
---	----

### SHOPPING

Baxley's Chocolates	93
Lazy Bear Trading Company	93

## SYLVA, DILLSBORO, BALSAM & CULLOWHEE

### THEATER

WCU John W. Bardo Fine & Performing Arts Center	93
---	----

### VISITOR INFORMATION

Dillsboro Merchants Association	94
Jackson County Chamber & Visitor Center	94
Jackson County TDA	94
Town of Dillsboro	94

## WAYNESVILLE, MAGGIE VALLEY & CANTON

### AGRITOURISM

Boyd Mountain Christmas Tree Farm	97
Buffalo Creek Vacations	97
Haywood's Historic Farmer's Market	97
Waynesville Tailgate Market	97

### CULTURAL/MUSEUM

Canton Area Historical Museum	98
Museum of NC Handicrafts at the Shelton House	98

### DINING

Fat Buddies Ribs & BBQ (Waynesville)	98
Jack the Dipper Ice Cream (Waynesville)	98

### LODGING

Andon-Reid Inn	98
Best Western Smoky Mountain Inn	98
Boyd Mountain Log Cabins	98
Buffalo Creek Vacations	99
Country Cabins	99
Oak Park Inn	99
The Swag	99

### BICYCLE/MOTORCYCLE

Smoky Mountain Steel Horses	99
-----------------------------	----

### TOURS/ECO-TOURS

Buffalo Creek Vacations - Ranch Tour/Store/Bison	99
Soco Crafts & Tower	99

### SHOPPING

Downtown Waynesville Association	100
----------------------------------	-----

Mast General Store 100

### **THEATER**

Folkmoot USA 100

### **VISITOR INFORMATION**

Town of Maggie Valley 100

Haywood Chamber of Commerce 100

Haywood County TDA 102

Maggie Valley Chamber of Commerce 102

## **NEARBY NEIGHBORS**

### **CULTURAL/MUSEUM**

Foxfire Museum & Heritage Center 104

### **DINING**

Cupboard Cafe 104

### **FAMILY ATTRACTION**

Foxfire Museum & Heritage Center 104

Goats on the Roof 104

Hillside Orchard Farms, Inc. 104

### **GOLF COURSES**

Sky Valley Country Club 104

### **LODGING**

Mountain Aire Cottages & Inn 105

Shoji Spa & Lodge 105

### **CAMPGROUNDS**

River Vista RV Resort 105

### **TOURS/SELF-GUIDED**

Appalachian Mural Trail 105

Blue Ridge Music Trails 105

Blue Ridge Craft Trails 105

### **GENERAL SERVICES**

JB Media Institute 105

### **VISITOR INFORMATION**

Blue Ridge National Heritage Area 105

Blue Ridge Parkway Association 105

Rabun County Chamber of Commerce & Welcome Center 104





Brochures | Gifts & Souvenirs |  
Beautiful grounds and facility | NC DOT |  
Friendly Staff | Tips on staying, playing, dining |  
Coffee and snacks available | Free wi-fi

4437 Georgia Rd, Franklin, NC 28734  
828-369-9606 | VisitSmokies.org

